

WAAS CH <b>86315</b> <b>W33A</b>	APP CRS <b>331°</b>	Rwy Idg <b>6600</b> TDZE <b>1021</b> Apt Elev <b>1021</b>
--	------------------------	---

RNAV (GPS) RWY 33

MANKATO RGNL (MKT)

For uncompensated Baro-VNAV systems, LNAV/VNAV NA below -17°C (2°F) or above 46°C (114°F). DME/DME RNP-0.3 NA. When local altimeter setting not received, use Waseca altimeter setting: increase LPV DA to 1278 feet, LNAV/VNAV DA to 1432 feet and LNAV/VNAV visibility ½ mile all Cats; increase all MDA 60 feet and LNAV Cats C and D visibility ½ mile.

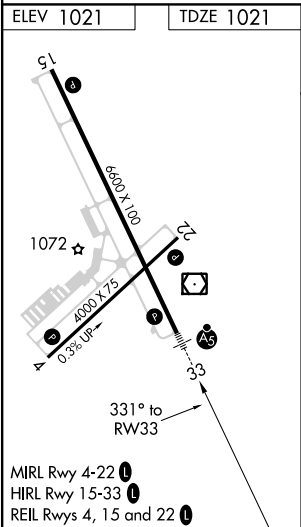
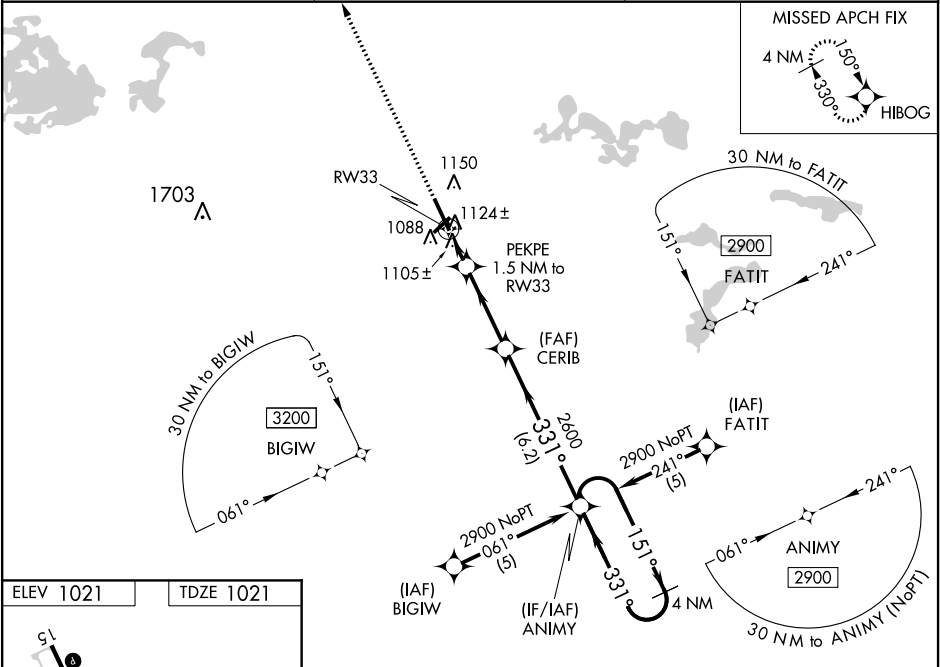
▲ For inoperative MALSRL when using Waseca altimeter setting, increase LPV all Cats visibility to ¾ mile and LNAV Cat C and D visibility to 1 ½ mile. Baro-VNAV and VDP NA when using Waseca altimeter setting. For inoperative MALSRL, increase LNAV/VNAV all Cats visibility to 1 ½ mile and LNAV Cats C and D visibility to 1 mile.

MALSRL

▲

MISSED APPROACH:  
Climb to 2700 direct  
HIBOG and hold.

AWOS-3PT <b>118.175</b>	MINNEAPOLIS CENTER <b>135.0 306.9</b>	UNICOM <b>122.725 (CTAF) 0</b>
----------------------------	--	-----------------------------------



2700	HIBOG				
*LNAV only					
CATEGORY	A	B	C	D	
LPV DA		1221-½	200 (200-½)		
LNAV/VNAV DA		1375-¾	354 (400-¾)		
LNAV MDA	1380-½	359 (400-½)	1380-⅝	359 (400-⅝)	
CIRCLING	1460-1 439 (500-1)	1480-1 459 (500-1)	1480-1½ 459 (500-1½)	1580-2 559 (600-2)	