

LOC I-MKT 108.7	APP CRS 331°	Rwy Idg TDZE Apt Elev	6600 1021 1021
---------------------------	------------------------	-----------------------------	---

ILS or LOC RWY 33

MANKATO RGNL (MKT)

▼

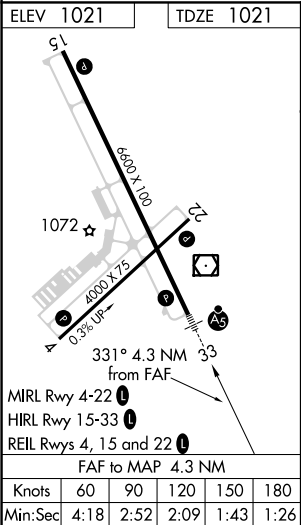
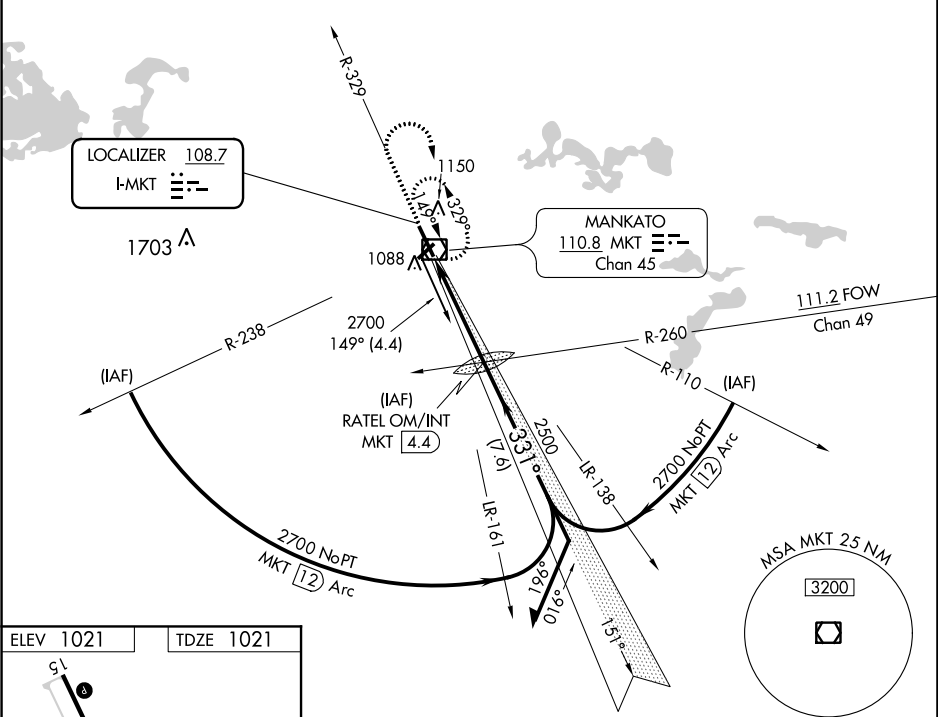
NA

For inop MALSR when using Waseca altimeter setting, increase S-ILS 33 all Cats visibility to 7/8 mile. When local altimeter setting not received, use Waseca altimeter setting: increase DA to 1278 feet; increase all MDA 60 feet and visibility Cats C and D 1/4 mile.

MALSR

MISSED APPROACH: Climb to 2000 then climbing right turn to 2700 direct MKT VOR/DME and hold.

AWOS-3PT 118.175	MINNEAPOLIS CENTER 135.0 306.9	UNICOM 122.725 (CTAF)
----------------------------	--	---------------------------------



2000	2700	MKT	RATEL OM/INT MKT 4.4	Remain within 10 NM
VGSI and ILS glidepath not coincident (VGSI Angle 3.00/TCH 49).				
4.3 NM				
CATEGORY	A	B	C	D
S-ILS 33	1221-1/2 200 (200-1/2)			
S-LOC 33	1420-1/2 399 (400-1/2)		1420-5/8 399 (400-5/8)	
CIRCLING	1460-1 439 (500-1)	1480-1 459 (500-1)	1480-1 1/2 459 (500-1 1/2)	1580-2 559 (600-2)