

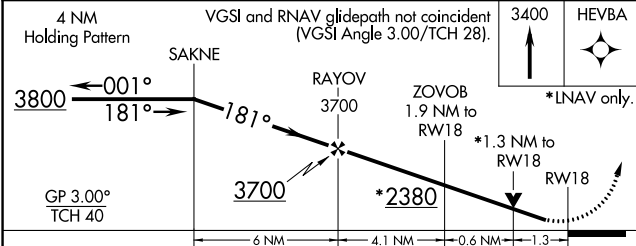
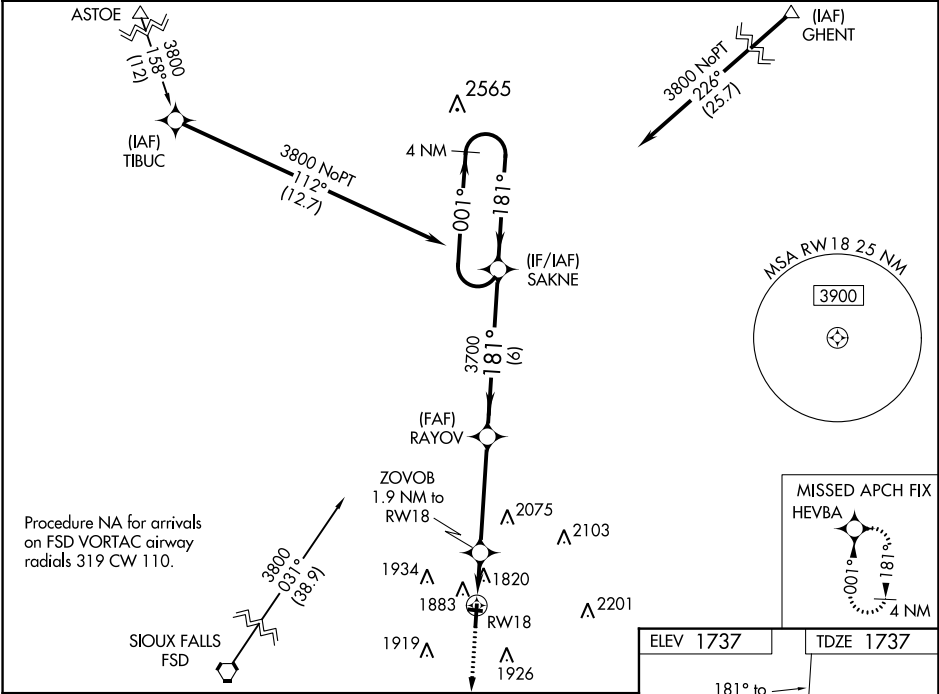
| | | | |
|--|------------------------|---|-------------|
| WAAS CH 40431 W18A | APP CRS 181° | Rwy Idg TDZE 1737 Apt Elev 1737 | 4306 |
|--|------------------------|---|-------------|

RNAV (GPS) RWY 18
PIPESTONE MUNI (PQN)

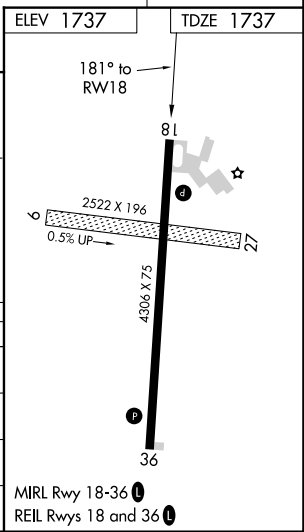
⚠ For uncompensated Baro-VNAV systems, LNAV/VNAV NA below -18°C (0°F) or above 54°C (130°F).
⚠ DME/DME RNP -0.3 NA. When local altimeter setting not received, use Slayton altimeter setting and increase all DA 68 feet and all MDA 80 feet; increase LPV all Cats, LNAV/VNAV all Cats, and Circling Cat C visibility ¼ mile; increase LNAV Cat C visibility ⅓ mile. Helicopter visibility reduction below ¾ SM NA. Baro-VNAV and VDP NA with Slayton altimeter setting. Circling NA to Rwy 9 and 27.

MISSED APPROACH:
Climb to 3400 direct HEVBA and hold.

| | | | |
|--------------------------|---|-----------------------|---------------------------------|
| AWOS-3 118.375 | MINNEAPOLIS CENTER 132.05 317.4 | GCO 121.725 | UNICOM 122.8 (CTAF) 0 |
|--------------------------|---|-----------------------|---------------------------------|



| CATEGORY | A | B | C | D |
|--------------|--------|-------------|-------------------------------|----|
| LPV DA | 1987-1 | 250 (300-1) | | NA |
| LNAV/VNAV DA | 2034-1 | 297 (300-1) | | NA |
| LNAV MDA | 2180-1 | 443 (500-1) | 2180-1 3/8 443 (500-1 3/8) | NA |
| CIRCLING | 2200-1 | 463 (500-1) | 2280-1 1/2 543 (600-1 1/2) | NA |



NC-1, 03 DEC 2020 to 31 DEC 2020

NC-1, 03 DEC 2020 to 31 DEC 2020