

WAAS CH 69304 W31A	APP CRS 308°	Rwy Idg TDZE 897 Apt Elev 900
--	------------------------	---

RNAV (GPS) RWY 31

CROOKSTON MUNI-KIRKWOOD FIELD (CKN)

RNP APCH.

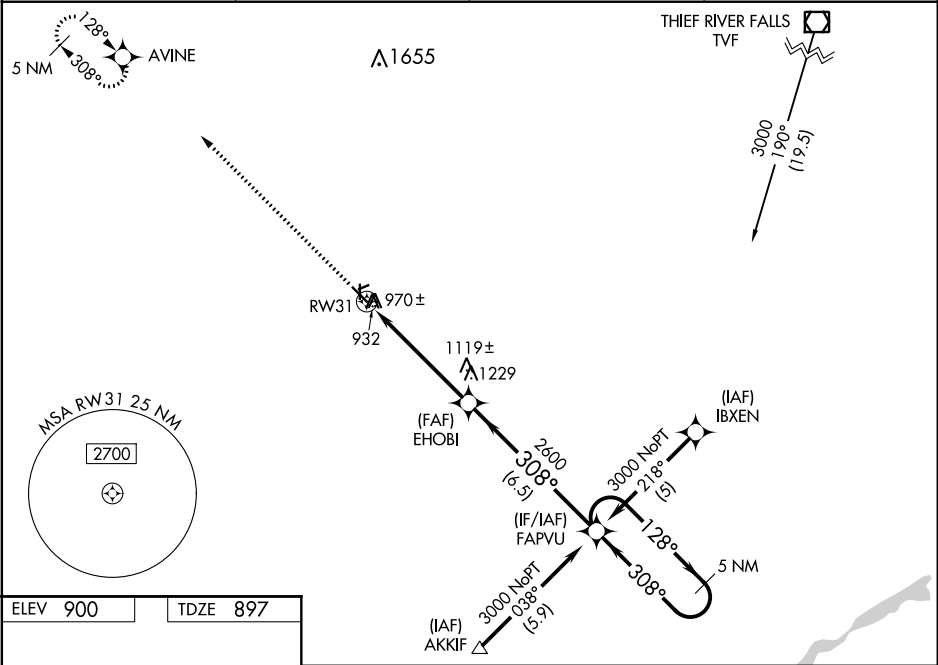
▽

⚠

Baro-VNAV NA when using Grand Forks altimeter setting. For uncompensated Baro-VNAV systems, LNAV/VNAV NA below -16°C (4°F) or above 54°C (130°F). If local altimeter setting not received, use Grand Forks altimeter setting and increase all DAs 62 feet and all MDAs 80 feet. Visibility reduction by helicopters NA. Circling Rwys 6, 24, 17, 35 NA at night.

MISSED APPROACH:
Climb to 3000 direct AVINE and hold.

AWOS-3 126.425	GRAND FORKS APP CON 118.1 318.1	CLNC DEL 118.15	UNICOM 122.7 (CTAF)
--------------------------	---	---------------------------	-------------------------------



ELEV 900	TDZE 897
REIL Rwys 13 and 31 MIRL Rwy 13-31	
CROOKSTON, MINNESOTA	
Orig-B 16AUG18	
CROOKSTON MUNI-KIRKWOOD FIELD (CKN)	
47°51'N-96°37'W	
RNAV (GPS) RWY 31	

NC-1, 03 DEC 2020 to 31 DEC 2020

NC-1, 03 DEC 2020 to 31 DEC 2020