

WAAS
CH **87131**
W15A

APP CRS
150°

Rwy Idg
TDZE
Apt Elev
5401
1011
1011

RNAV (GPS) RWY 15

NEW ULM MUNI (ULM)

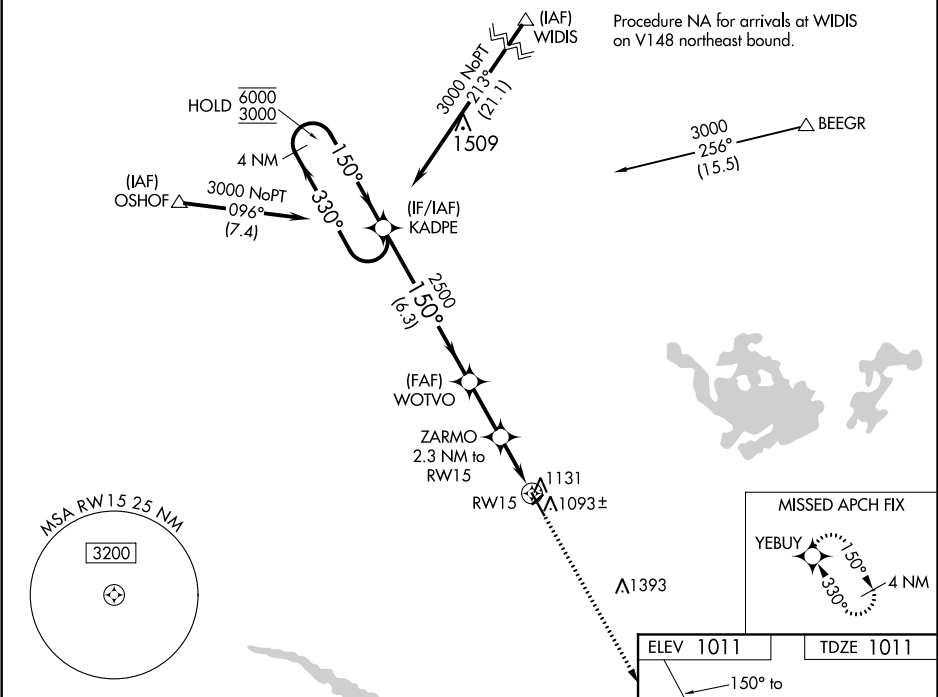
RNP APCH.

▼

Circling NA to Rwy 4 and 22. For uncompensated Baro-VNAV systems, LNAV/VNAV NA below -17°C or above 54°C.

MISSED APPROACH: Climb to 3000 direct YEBUY and hold.

AWOS-3 118.325	MINNEAPOLIS CENTER 127.1 290.2	GCO 121.725	UNICOM 122.8 (CTAF) 0
--------------------------	--	-----------------------	---------------------------------



4 NM Holding Pattern		VGSI and RNAV glidepath not coincident (VGSI Angle 3.00/TCH 25).		3000	YEBUY
6000 3000		KADPE		WOTVO	
GP 3.00° TCH 40		2500		ZARMO 2.3 NM to RW15	
6.3 NM		2.3 NM		1.1 NM	
1.2 NM		1.2 NM		RW15	
CATEGORY		A		B	
LPV DA		1261-7/8		250 (300-7/8)	
LNAV/VNAV DA		1298-1		287 (300-1)	
LNAV MDA		1400-1		389 (400-1)	
CIRCLING		1440-1		1500-1	
429 (500-1)		489 (500-1)		1620-1 3/4	
609 (700-1 3/4)		1620-2		609 (700-2)	