

WAAS CH <b>63242</b> <b>W35A</b>	APP CRS <b>357°</b>	Rwy Idg <b>3598</b> TDZE <b>1411</b> Apt Elev <b>1411</b>
--	------------------------	---

RNAV (GPS) RWY 35  
WINDOM MUNI (MWM)

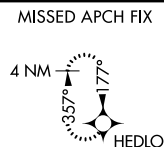
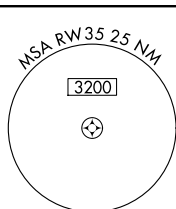
RNP APCH.

**T** Rwy 35 helicopter visibility reduction below  $\frac{3}{4}$  SM NA. For uncompensated  
**A** Baro-VNAV systems, LNAV/VNAV NA below -17°C or above 54°C.

**MISSED APPROACH:** Climb to 3000 direct HEDLO and hold.

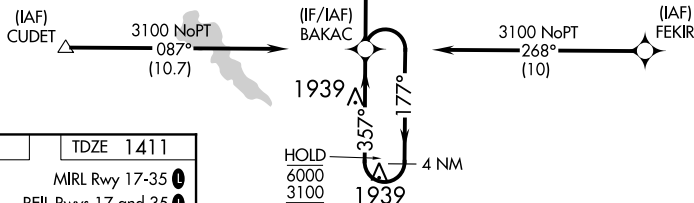
AWOS-3  
118.525

MINNEAPOLIS CENTER  
127.1 290.2

CTAF  
122.9 **L**

Δ 1778

Procedure NA for arrivals at CUDET  
on V250 southwest bound.



ELEV 1411	TDZE 1411
MIRL Rwy 17-35 <b>L</b>	
REIL Rwy 17 and 35 <b>L</b>	

