

WAAS

CH **56304**

W16A

APP CRS

162°

Rwy Idg

4401

TDZE

1055

Apt Elev

1060

RNAV (GPS) RWY 16

ROSEAU MUNI/RUDY BILLBERG FIELD (R.O.X)

RNP APCH.

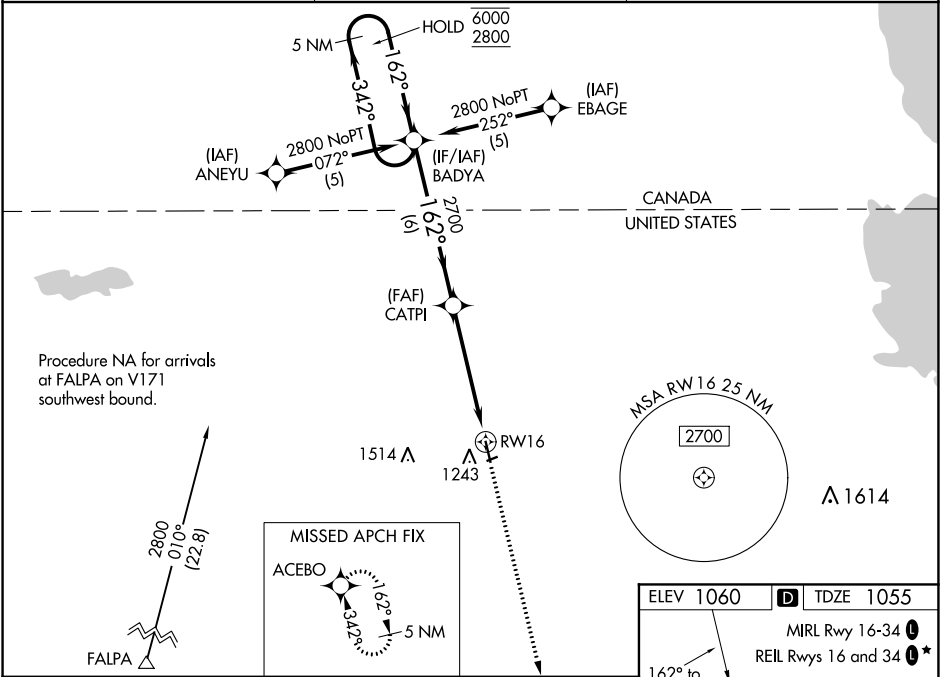
▼

▲

Circling NA to Rws 6 and 24. Baro-VNAV and VDP NA when using Warroad altimeter setting. For uncompensated Baro-VNAV systems, LNAV/VNAV NA below -17°C or above 46°C. When local altimeter setting not received, use Warroad altimeter setting and increase LPV DA to 1341 feet, LNAV/VNAV DA to 1439 feet and all MDA 40 feet, increase LNAV Cat C visibility ½ SM.

MISSED APPROACH: Climb to 2800 direct ACEBO and hold.

AWOS-3 108.8	MINNEAPOLIS CENTER 134.75 251.1	UNICOM 122.8 (CTAF) 0
------------------------	---	---------------------------------



5 NM Holding Pattern

VGSI and RNAV glidepath not coincident (VGSI Angle 3.00/TCH 44).

2800

ACEBO

GP 3.00° TCH 40

6000 2800

342° 162°

162°

2700

CATPI

1.3 NM to RW16

*LNAV only.

6 NM 3.7 NM 1.3

CATEGORY	A	B	C	D
LPV DA	1305-1		250 (300-1)	
LNAV/VNAV DA	1403-1¼		348 (400-1¼)	
LNAV MDA	1500-1	445 (500-1)	1500-1¼ 445 (500-1¼)	1500-1½ 445 (500-1½)
CIRCLING	1600-1	540 (600-1)	1600-1½ 540 (600-1½)	1640-2 580 (600-2)

