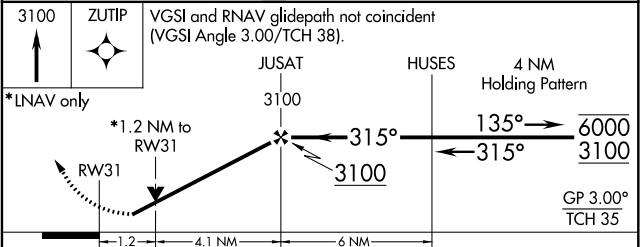
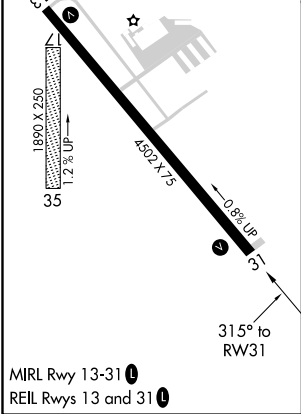
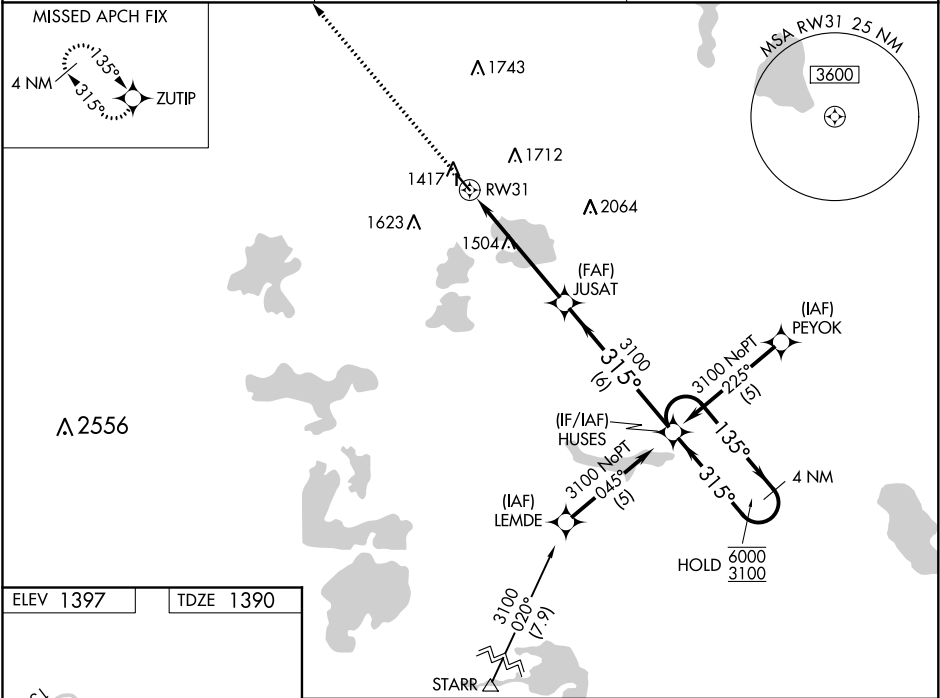


WAAS CH 86704 W31A	APP CRS 315°	Rwy Idg TDZE Apt Elev	4502 1390 1397
--	------------------------	-----------------------------	---

RNAV (GPS) RWY 31
DETROIT LAKES-WETHING FIELD (DTL)

RNP APCH. ⚠ Circling NA to Rws 17 and 35. Circling to Rwy 13 NA at night. Rwy 31 helicopter visibility reduction below 3/4 SM NA. VDP NA when using Park Rapids altimeter setting. When local altimeter setting not received, use Park Rapids altimeter setting; increase LPV DA to 1738 feet; increase all MDAs 100 feet and visibility Cat C 1/4 SM and Cat D 1/2 SM and Circling visibility Circling Cat C and D 1/4 SM.	MISSED APPROACH: Climb to 3100 direct ZUTIP and hold.
--	---

AWOS-3 111.2	MINNEAPOLIS CENTER 126.1 269.2	UNICOM 122.8 (CTAF) 0
------------------------	--	---------------------------------



CATEGORY	A	B	C	D
LPV DA	1654-1 264 (300-1)			
LNAV MDA	1780-1 390 (400-1)	1780-1 390 (400-1 1/8)	1780-1 390 (400-1 1/4)	1780-1 390 (400-1 1/4)
CIRCLING	1880-1 483 (500-1)	1940-1 543 (600-1)	1940-1 543 (600-1 1/2)	2080-2 683 (700-2 1/4)

NC-1, 03 DEC 2020 to 31 DEC 2020

NC-1, 03 DEC 2020 to 31 DEC 2020