

WAAS CH <b>58314</b> <b>W31A</b>	APP CRS <b>311°</b>	Rwy Idg <b>6401</b> TDZE <b>1450</b> Apt Elev <b>1470</b>
--	------------------------	---

RNAV (GPS) RWY 31  
DEVILS LAKE RGNL (DVL)

**T** For uncompensated Baro-VNAV systems, LNAV/VNAV NA below -17°C (2°F) or above 54°C (130°F). DME/DME RNP-0.3 NA. Baro-VNAV and VDP NA when using Cando altimeter setting. For inop MALSR, increase LNAV/VNAV all Cats visibility to ¾, LNAV Cats C and D visibility to 1 mile. When local altimeter setting not received, use Cando altimeter setting and increase all DA 63 feet, and all MDA 80 feet, increase LNAV/VNAV all Cats visibility ½ mile, LNAV and Circling Cats C and D visibility ¼ mile. For inop MALSR when using Cando altimeter setting, increase LPV all Cats visibility to ¾ mile.

MALSR



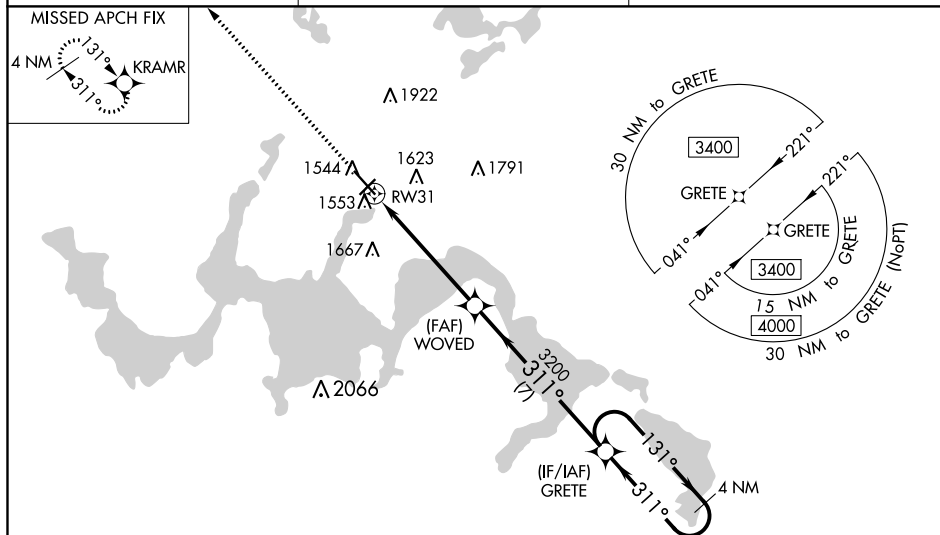
**MISSED APPROACH:**  
Climb to 3400 direct  
KRAMR and hold.

AWOS-3PT  
125.875

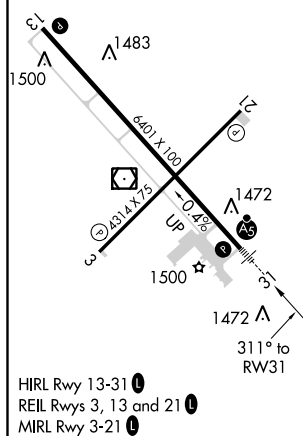
MINNEAPOLIS CENTER  
124.2 270.3

UNICOM  
122.8 (CTAF) **L**

MISSED APCH FIX



ELEV 1470	<b>D</b>	TDZE 1450
-----------	----------	-----------



DEVILS LAKE, NORTH DAKOTA  
Amdt 1B 05FEB15

48°07'N-98°55'W

DEVILS LAKE RGNL (DVL)  
RNAV (GPS) RWY 31

NC-1, 03 DEC 2020 to 31 DEC 2020

[illegible]