

|  |                        |   |
|--|------------------------|---|
| WAAS<br>CH <b>93608</b><br><b>W03A</b> | APP CRS<br><b>038°</b> | Rwy Idg <b>4314</b><br>TDZE <b>1450</b><br>Apt Elev <b>1470</b> |
|--|------------------------|---|

RNAV (GPS) RWY 3

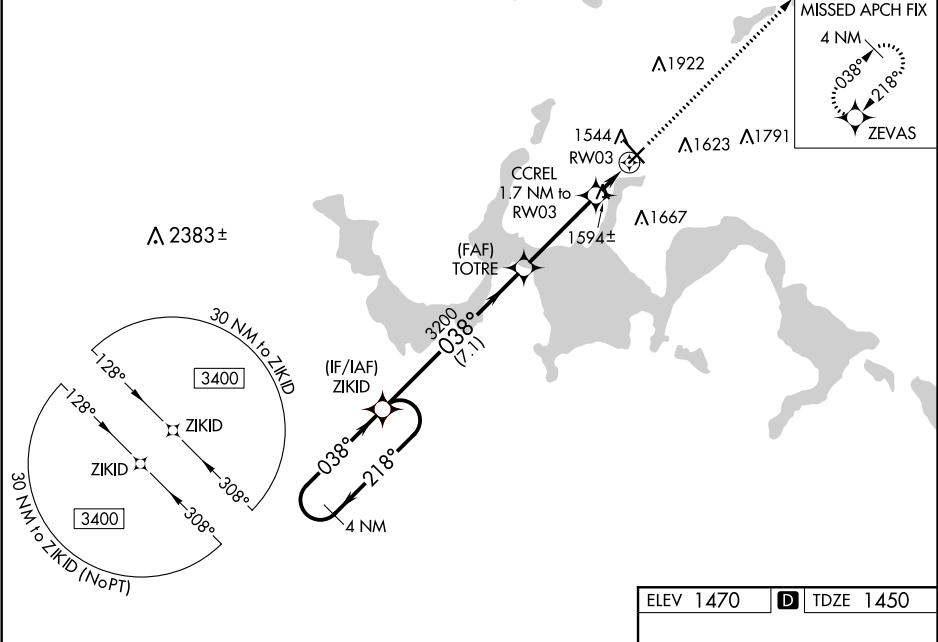
DEVILS LAKE RGNL (DVL)

⚠

For uncompensated Baro-VNAV systems, LNAV/VNAV NA below -17°C (2°F) or above 54°C (130°F). DME/DME RNP-0.3 NA. When local altimeter setting not received, use Cando altimeter setting and increase all DA 63 feet, and all MDA 80 feet, increase LNAV/VNAV all Cats visibility 1⁄8 mile, LNAV and Circling Cat C and D visibility 1⁄4 mile. Helicopter visibility reduction below 3⁄4 SM NA. Baro-VNAV NA when using Cando altimeter setting.

MISSED APPROACH: Climb to 3400 direct ZEVAS and hold.

|                            |  |  |
|----------------------------|--|--|
| AWOS-3PT<br><b>125.875</b> | MINNEAPOLIS CENTER<br><b>124.2 270.3</b> | UNICOM<br><b>122.8 (CTAF)</b> <b>📶</b> |
|----------------------------|--|--|



|  |                    |                      |                      |   |
|--|--------------------|----------------------|----------------------|---|
| VGSI and RNAV glidepath not coincident (VGSI Angle 3.00/TCH 25). |                    |                      |                      |   |
| 4 NM Holding Pattern   |                    |                      |                      |   |
| 3400 ← 218° / 038° →   |                    |                      |                      |   |
| GP 3.00° TCH 50  |                    |                      |                      |   |
| 7.1 NM      3.6 NM      1.7 NM                                   |                    |                      |                      |   |
| CATEGORY   | A                  | B                    | C                    | D |
| LPV DA   | 1700-1 250 (300-1) |                      |                      |   |
| LNAV/VNAV DA   | 1714-1 264 (300-1) |                      |                      |   |
| LNAV MDA   | 1860-1 410 (400-1) | 1860-1½ 410 (400-1½) |                      |   |
| 🌀 CIRCLING   | 2000-1 530 (600-1) | 2240-2¼ 770 (800-2¼) | 2240-2½ 770 (800-2½) |   |

