

WAAS CH 86412 W34A	APP CRS 344°	Rwy Idg 5756 TDZE 1356 Apt Elev 1356
--	------------------------	---

GRAND RAPIDS/ RNAV (GPS) RWY 34
ITASCA COUNTY-GORDON NEWSTROM FIELD (GPZ)

RNP APCH.

T Circling NA to Rwy 10 and 28. Circling NA for Cat D east of Rwy 16-34. Circling Rwy 5 NA at night. For uncompensated Baro-VNAV systems, LNAV/VNAV NA below -17°C or above 49°C. For inop ALS, increase LPV all Cats visibility to 1 SM, increase LNAV/VNAV all Cats visibility to 1½ SM, increase LNAV Cats C and D visibility to 1¾ SM.

MALSR



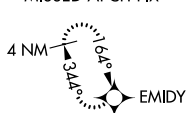
MISSED APPROACH: Climb to 3000
direct EMIDY and hold.

AWOS-3PT
118.425

MINNEAPOLIS CENTER
127.9 281.45

UNICOM
122.8 (CTAF) **L**

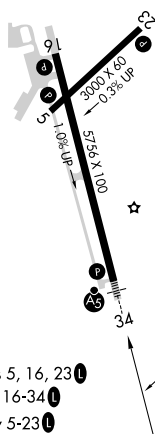
MISSED APCH FIX

 $2017 \pm \Delta$

Procedure NA for arrivals at
GPZ VOR/DME on V430
westbound.

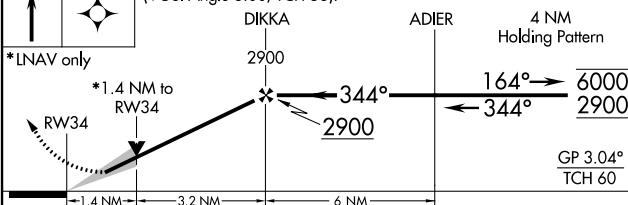
ELEV 1356


TDZE 1356



REIL Rwy 5, 16, 23 **L**
HIRL Rwy 16-34 **L**
MIRL Rwy 5-23 **L**

3000 ▲	EMIDY ▲	VGSI and RNAV glidepath not coincident (VGSI Angle 3.00/TCH 53).
-----------	------------	---



CATEGORY		A	B	C	D
LPV	DA	1683-1½		327 (400-1½)	
LNAV/ VNAV	DA	1928-1½		572 (600-1½)	
LNAV	MDA	1860-1½ 504 (600-1½)		1860-1 504 (600-1)	
 CIRCLING		1900-1 544 (600-1)		1900-1½ 544 (600-1½)	2000-2 644 (700-2)

GRAND RAPIDS, MINNESOTA
Orig-C 25APR19

GRAND RAPIDS/ITASCA COUNTY-GORDON NEWSTROM FIELD (GPZ)
47°13'N-93°31'W PNAV (GPS) RWY 34

RNAV (GPS) RWY 34