

## RNAV (GPS) RWY 31

APCH CRS **312°** Rwy Idg **6100**  
THRE **1146**  
Arpt Elev **1150**

AL-5226 [USA]

RAY S. MILLER AAF (KRYM)

**T** \* When ALS inop, increase CAT D vis to 1¼ miles.

MALSF



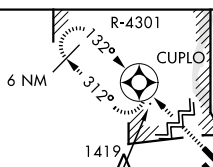
MISSED APPROACH: Climb to 3000 direct CUPLO and hold.

**A** NA DME/DME RNP-0.3 NA.

MINNEAPOLIS CENTER  
**118.05 239.0**

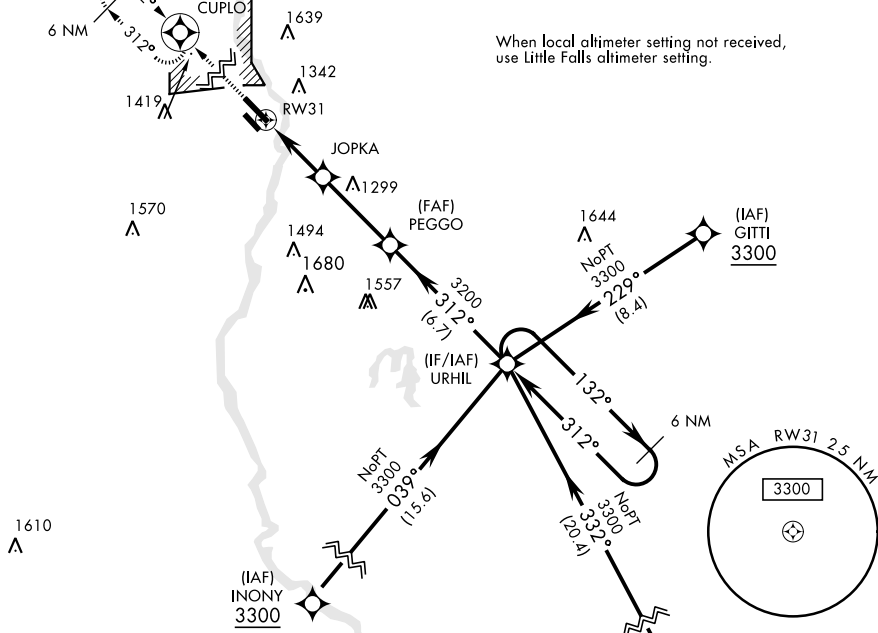
MILLER TOWER ★  
**126.2 0 254.4 46.7**

CLNC DEL  
**126.2**



Procedure NA when R-4301 is active.

When local altimeter setting not received, use Little Falls altimeter setting.



3000

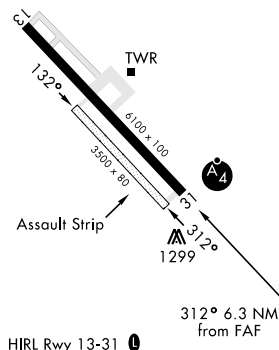
CUPLO

VDP NA when using Little Falls altimeter setting.

CATEGORY	A		B		C		D	
LNAV MDA *	1580-¾	434	(500-¾)		1580-1	434	(500-1)	
<b>C</b> CIRCLING	1640-1 490 (500-1)	1660-1 510 (600-1)			1720-1½ 570 (600-1½)	2080-3 930 (1000-3)		
LITTLE FALLS ALTIMETER SETTING								
LNAV MDA *	1620-¾	474	(500-¾)		1620-1½	474	(500-1½)	
<b>C</b> CIRCLING	1680-1	530	(600-1)		1760-1¾ 610 (700-1¾)	2120-3 970 (1000-3)		

ELEV 1150

THRE 1146



## RNAV (GPS) RWY 31