

VOR/DME OTG	APP CRS	Rwy Idg	5500
110.6	134°	TDZE	1574
Chan 43		Apt Elev	1574

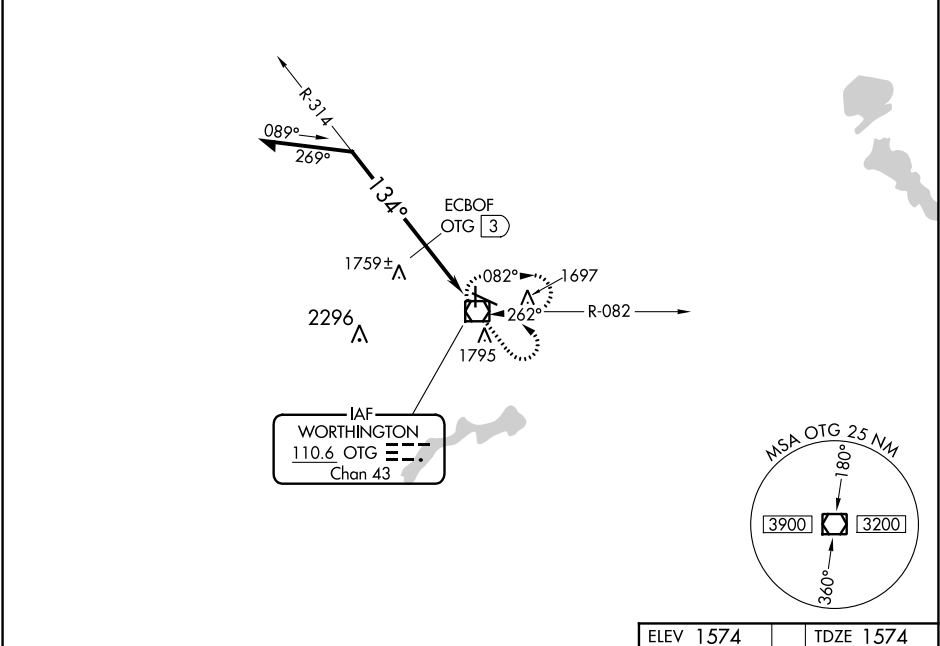
VOR RWY 11

WORTHINGTON MUNI (OTG)

When local altimeter setting not received, use Jackson altimeter setting and increase all MDA 80 feet, Circling Cat A and D visibility ¼ mile, increase ECBOF fix minimums S-11 Cat C/D visibility ⅛ mile and Circling Cat C visibility ¼ mile. When VGSI inop, Straight-in/Circling Rwy 11 procedure NA at night. Visibility reduction by helicopters NA.

MISSED APPROACH: Climb to 2700 then climbing left turn to 3400 direct to OTG VOR/DME and hold.

AWOS-3PT 121.075	MINNEAPOLIS CENTER 132.05 317.4	UNICOM 122.8 (CTAF) 1
---------------------	------------------------------------	--------------------------



ELEV 1574

TDZE 1574

OTG VOR/DME

2700 3400 OTG

VGSI and descent angles not coincident (VGSI Angle 3.00/TCH 42).

Remain within 10 NM

314°

ECBOF OTG 3

2.92° TCH 42

2.4 NM

CATEGORY	A	B	C	D
S-11	2360-1 786 (800-1)	2360-1¼ 786 (800-1¼)	2360-2½	786 (800-2½)
CIRCLING	2360-1 786 (800-1)	2360-1¼ 786 (800-1¼)	2360-2½	786 (800-2½)
ECBOF FIX MINIMUMS (DME REQUIRED)				
S-11	2020-1	446 (500-1)	2020-1⅜	446 (500-1⅜)
CIRCLING	2100-1	526 (600-1)	2100-1½ 526 (600-1½)	2140-2 566 (600-2)

134° to VOR/DME

MIRL Rwy 18-36 1

HIRL Rwy 11-29 1

REIL Rws 11, 18, and 36 1