

LOC I-OTG <b>111.7</b>	APP CRS <b>293°</b>	Rwy Idg TDZE <b>1570</b> Apt Elev <b>1574</b>	ILS or LOC RWY 29 WORTHINGTON MUNI (OTG)
---------------------------	------------------------	---	---

⚠

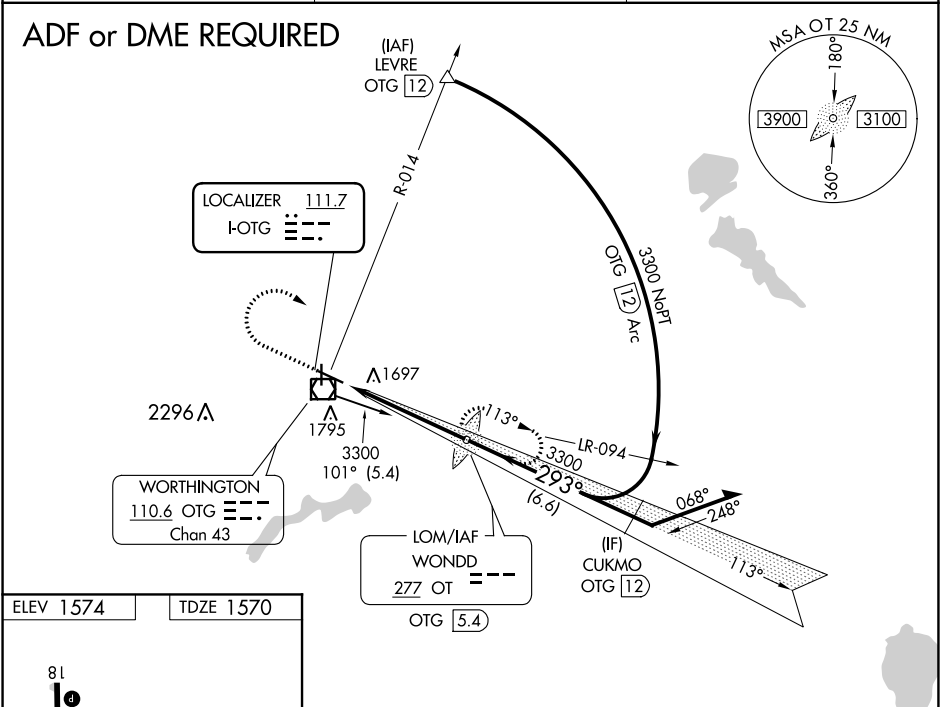
NA

ADF or DME required. Autopilot coupled approach NA below 1770. When local altimeter setting not received, use Jackson altimeter setting and increase all DA 78 feet, all MDA 80 feet, increase S-LOC 29 Cat C and D and Circling Cat C visibility ¼ mile. For inoperative MALSR, when using Jackson altimeter setting, increase S-ILS 29 all Cats visibility to ¾ mile.

MALSR

MISSED APPROACH: Climb to 2500 then climbing right turn to 3300 direct WONDD LOM/OTG 5.4 DME and hold.

AWOS-3PT <b>121.075</b>	MINNEAPOLIS CENTER <b>132.05 317.4</b>	UNICOM <b>122.8 (CTAF)</b>
----------------------------	---	-------------------------------



ELEV 1574	TDZE 1570
 MIRL Rwy 18-36 HIRL Rwy 11-29 REIL Rws 11, 18, and 36	 VGSi and ILS glidepath not coincident (VGSi Angle 3.00/TCH 43)
FAF to MAP 4.9 NM	OT LOM OTG 5.4
Knots Min:Sec 4:54 3:16 2:27 1:58 1:38	3205 113° 293° 3300 GS 3.00° TCH 53
Category	A B C D
S-ILS 29	1770-½ 200 (200-½)
S-LOC 29	2000-½ 430 (500-½) 2000-¾ 430 (500-¾)
CIRCLING	2100-1 526 (600-1) 2100-1½ 526 (600-1½) 2140-2 566 (600-2)