


WAAS CH 69311 W31A	APP CRS 313°	Rwy Idg TDZE 1114 Apt Elev 1119	6304
--	------------------------	---	-------------

RNAV (GPS) RWY 31

THIEF RIVER FALLS RGNL (TVF)

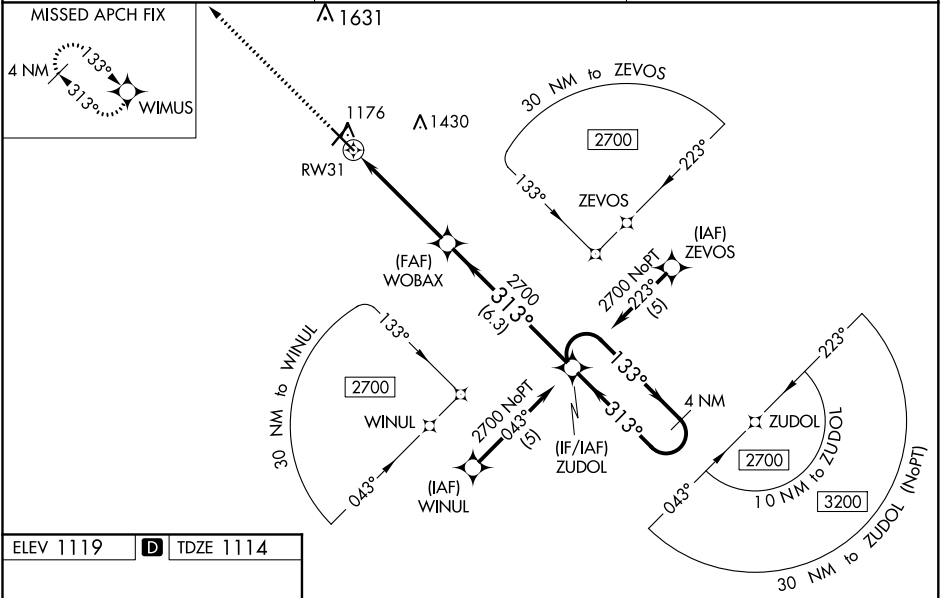
⚠ Baro-VNAV and VDP NA when using Crockston altimeter setting. For uncompensated Baro-VNAV systems, LNAV/VNAV NA below -17°C (2°F) or above 54°C (130°F). DME/DME RNP-0.3 NA. When local altimeter setting not received, use Crockston altimeter setting: increase LPV DA to 1446 feet and all visibilities $\frac{1}{8}$ SM; increase LNAV/VNAV DA to 1510 feet and all visibilities $\frac{3}{8}$ SM; increase all MDAs 100 feet and visibility Cats C and D $\frac{1}{4}$ SM. For inoperative MALS, increase LNAV Cats C/D visibility to $\frac{1}{8}$ mile. For inoperative MALS, when using Crockston altimeter setting, increase LPV all Cats visibility to $\frac{1}{8}$ mile, LNAV/VNAV all Cats visibility to $\frac{1}{4}$ mile, LNAV Cats C/D visibility to $\frac{1}{8}$ mile.

MALS



MISSED APPROACH:
Climb to 2700 direct
WIMUS and hold.

AWOS-3PT 119.025	MINNEAPOLIS CENTER 132.15 269.6	UNICOM 122.8 (CTAF) 1
----------------------------	---	--


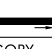


ELEV 1119 **D** TDZE 1114

HIRL Rwy 13-31 **1**

MIRL Rwy 4-22 **1**

REIL Rwy 4, 13 and 22 **1**

	2700	WIMUS	WOBAX	ZUDOL	4 NM Holding Pattern
					
		* LNAV only	* 1.3 NM to RW31		
					
		1.3 NM	3.5 NM	6.3 NM	
CATEGORY	A	B	C	D	
LPV DA	1364- $\frac{1}{2}$	250 (300- $\frac{1}{2}$)			
LNAV/VNAV DA	1428- $\frac{1}{2}$	314 (400- $\frac{1}{2}$)			
LNAV MDA	1580- $\frac{1}{2}$	466 (500- $\frac{1}{2}$)	1580-1	466 (500-1)	
C CIRCLING	1580-1	461 (500-1)	1820-2 701 (800-2)	1980-2 $\frac{3}{4}$ 861 (900-2 $\frac{3}{4}$)	