

WAAS CH <b>77836</b> <b>W22A</b>	APP CRS <b>217°</b>	Rwy Idg TDZE Apt Elev	<b>4997</b> <b>1119</b> <b>1119</b>
--	------------------------	-----------------------------	---

RNAV (GPS) RWY 22

THIEF RIVER FALLS RGNL (TVF)

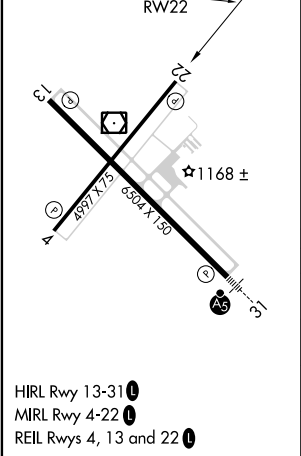
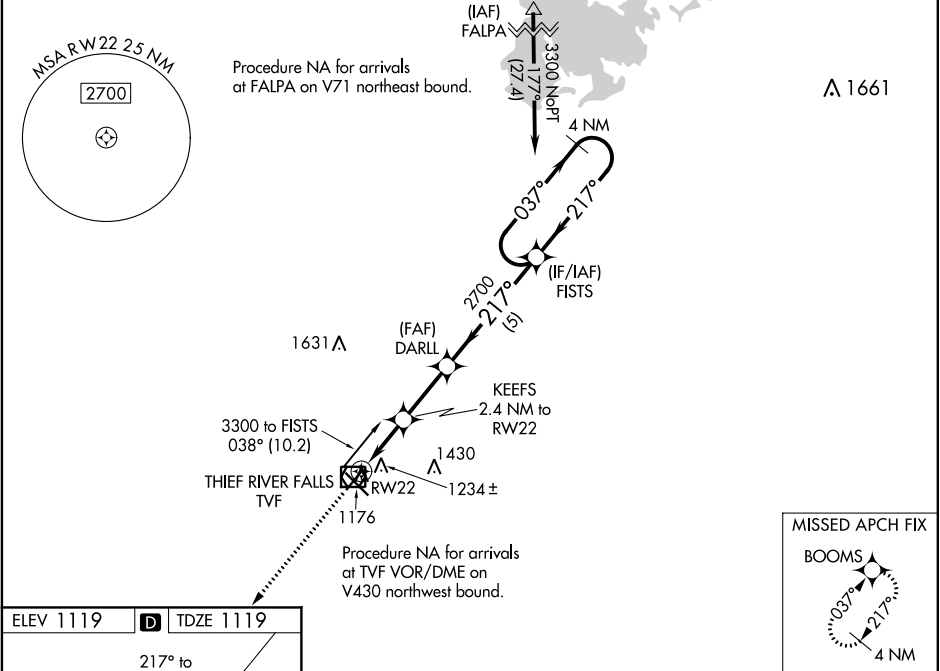
⚠

⚠

Baro-VNAV and VDP NA when using Crookston altimeter setting. For uncompensated Baro-VNAV systems, LNAV/VNAV NA below -17°C (2°F) or above 54°C (130°F). DME/DME RNP-0.3 NA. When local altimeter setting not received, use Crookston altimeter setting and increase all DA 82 feet and all MDA 100 feet. Increase LPV all Cats visibility to 1½ mile and LNAV/VNAV all Cats visibility to 1¼ mile.

MISSED APPROACH:  
Climb 3300 direct  
BOOMS and hold.

AWOS-3PT <b>119.025</b>	MINNEAPOLIS CENTER <b>132.15 269.6</b>	UNICOM <b>122.8 (CTAF)</b> <b>1</b>
----------------------------	---	--



3300	BOOMS	VGSI and RNAV glidepath not coincident (VGSI Angle 3.00/TCH 34).			
* LNAV only		KEEFS 2.4 NM to RW22	DARLL 2700	FISTS 4 NM Holding Pattern	3300
* 1.1 NM to RW22		1920*	2700	GP 3.00° TCH 40	
1.1 NM		1.3 NM	2.4 NM	5 NM	
CATEGORY	A	B	C	D	
LPV DA	1369-1	250 (300-1)	NA	NA	
LNAV/VNAV DA	1396-1	277 (300-1)	NA	NA	
LNAV MDA	1500-1	381 (400-1)	NA	NA	
CIRCLING	1540-1 421 (500-1)	1580-1 461 (500-1)	NA	NA	