

VOR/DME RWF <b>113.3</b> Chn <b>80</b>	APP CRS <b>016°</b>	Rwy Idg TDZE Apt Elev	<b>N/A</b> <b>N/A</b> <b>1024</b>
--	------------------------	-----------------------------	---

VOR-A

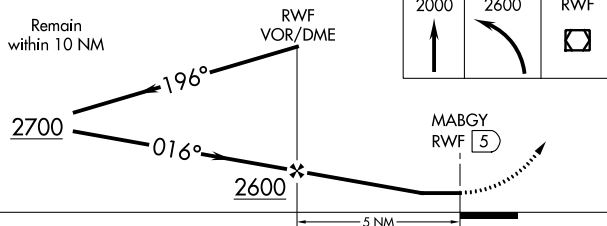
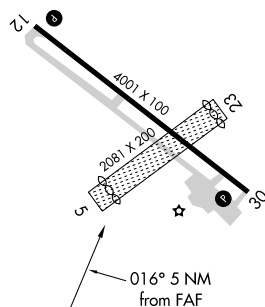
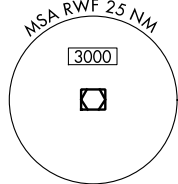
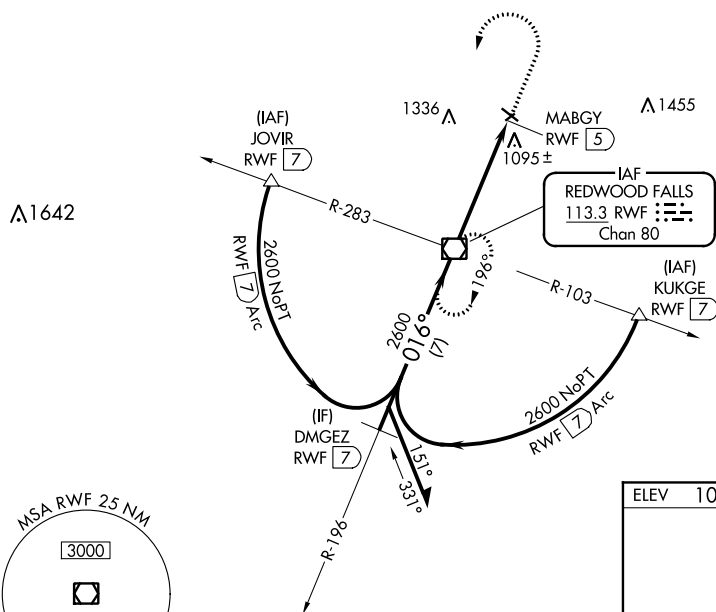
REDWOOD FALLS MUNI (RWF)

T  
A

When local altimeter setting not received, use Olivia Rgnl altimeter setting and increase all MDA 40 feet.

**MISSED APPROACH:** Climb to 2000 then climbing left turn to 2600 direct RWF VOR/DME and hold.

ASOS <b>126,575</b>	MINNEAPOLIS CENTER <b>127.1 290.2</b>	UNICOM <b>123.0</b> (CTAF) <b>0</b>
------------------------	--	--



CATEGORY	A	B	C	D	FAF to MAP 5 NM					
CIRCLING	1540-1	1580-1	1580-1½	1700-2¼	Knots	60	90	120	150	180
	516 (600-1)	556 (600-1)	556 (600-1½)	676 (700-2¼)	Min:Sec	5:00	3:20	2:30	2:00	1:40