



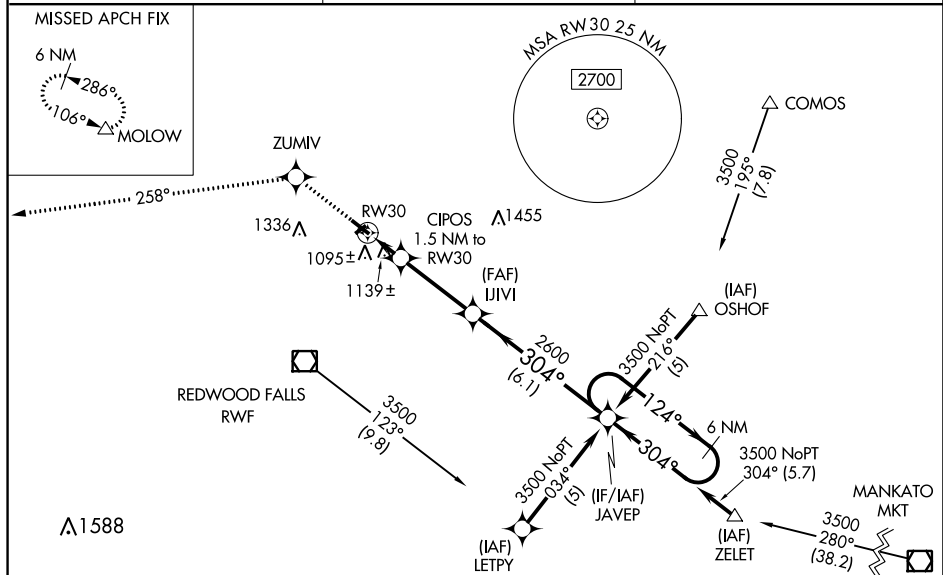
WAAS CH <b>86610</b> <b>W30A</b>	APP CRS <b>304°</b>	Rwy Idg <b>4001</b> TDZE <b>1024</b> Apt Elev <b>1024</b>
--	------------------------	---

# RNAV (GPS) RWY 30

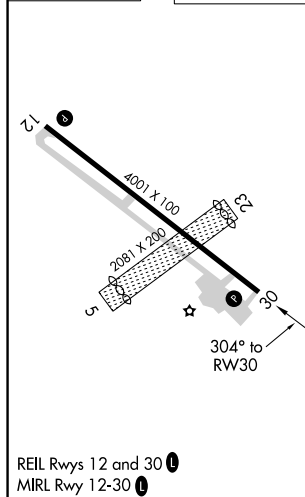
	DME/DME RNP-0.3 NA. Visibility reduction by helicopters NA.
	For uncompensated Baro-VNAV systems, LNAV/VNAV NA below -17°C (2°F) or above 46°C (114°F). Baro-VNAV NA when using Olivia Rgnl altimeter setting. When local altimeter setting not received, use Olivia Rgnl altimeter setting and increase all DA/MDA 40 feet and LNAV Cat C visibility ¼ mile.

**MISSED APPROACH:** Climb to 3800 direct ZUMIV and via 258° track to MOLOW and hold.

ASOS <b>126.575</b>	MINNEAPOLIS CENTER <b>127,1 290,2</b>	UNICOM <b>123.0</b> (CTAF) <b>0</b>
------------------------	--	--



ELEV 1024	TDZE 1024
-----------	-----------



Procedure NA for arrivals at MKT VOR/DME  
via V250 northeast bound.

3800 ↑	ZUMIV 	258° tr	MOLOW △	VGS1 and RNAV glidepath not coincident (VGS1 Angle 3.00°/TCH 37). 6 NM Holding Pattern			
*LNAV only				JAVEP 124° → 3500 ← 304° GP 3.00° TCH 45			
CATEGORY	A		B		C		D
LPV DA			1304-1 280 (300-1)				
LNAV/ VNAV DA			1440-1½ 416 (500-1½)				
LNAV MDA			1400-1 376 (400-1)				1400-1¼ 376 (400-1¼)
CIRCLING	1480-1 456 (500-1)	1580-1 556 (600-1)	1580-1½ 556 (600-1½)	1700-2¼ 676 (700-2¼)			

REDWOOD FALLS MUNI (RWF)  
RNAV (GPS) RWY 30