

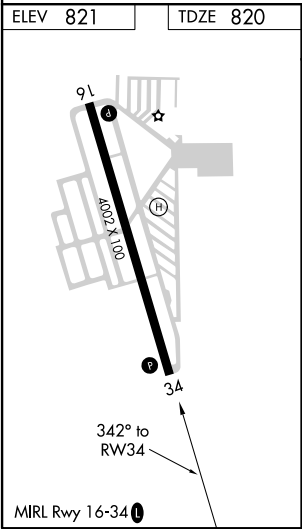
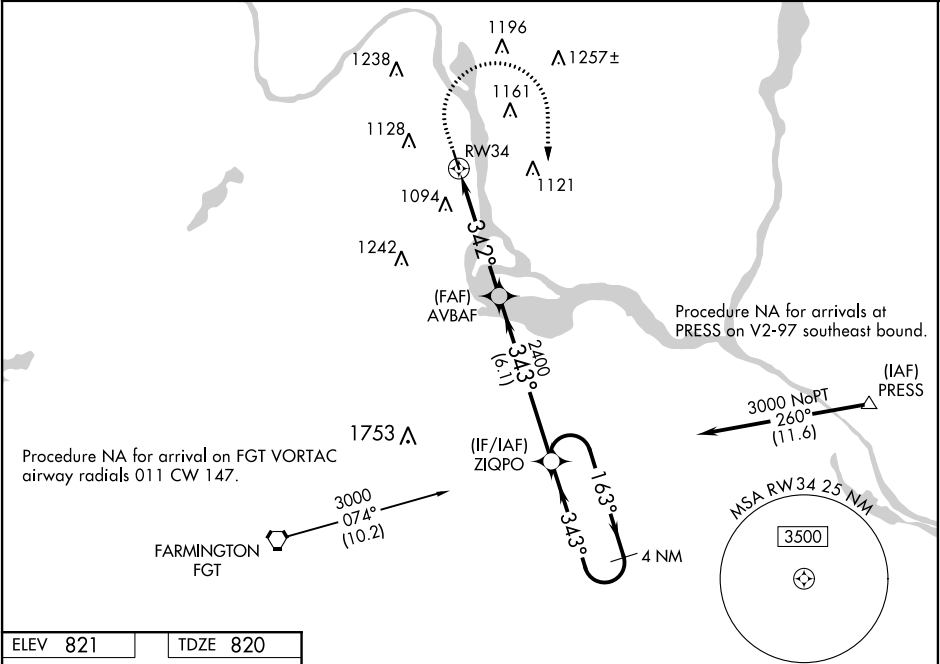
WAAS CH 99636 W34A	APP CRS 342°	Rwy Idg TDZE Apt Elev	4002 820 821
----------------------------------------	------------------------	-----------------------------	-----------------------------------------

RNAV (GPS) RWY 34

SOUTH ST PAUL MUNI-RICHARD E FLEMING FIELD (SGS)

<div><div>▼</div><div>For uncompensated Baro-VNAV systems, LNAV-VNAV NA below -22°C (-7°F) or above 54°C (130°F). Rwy 34 helicopter visibility reduction below ¾ SM NA. DME/DME RNP-0.3 NA.</div></div> <div><div>⚠</div><div>MISSED APPROACH: Climb to 1400 then climbing right turn to 3000 direct ZIQPO and hold.</div></div>

AWOS-3 119.425	MINNEAPOLIS APP CON 121.2 335.65	CLNC DEL 118.2	UNICOM 122.7 (CTAF) 0
--------------------------	--------------------------------------------	--------------------------	---------------------------------



	1400	3000	ZIQPO	
* LNAV only.				
	* 1.4 NM to RW34		AVBAF	ZIQPO
			2400	3000
	1.4		3.5 NM	6.1 NM
CATEGORY	A	B	C	D
LPV DA	1102-7 ⁸		282 (300-7 ⁸)	
LNAV/VNAV DA	1378-1 ⁵ ₈		558 (600-1 ⁵ ₈)	
LNAV MDA	1300-1	480 (500-1)	1300-1 ³ ₈	480 (500-1 ³ ₈)
CIRCLING	1400-1 579 (600-1)	1540-1 719 (800-1)	1540-2 719 (800-2)	1620-2 ½ 799 (800-2 ½)