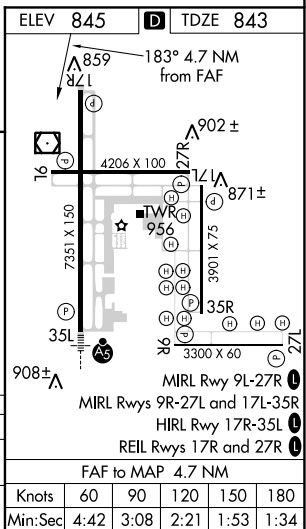
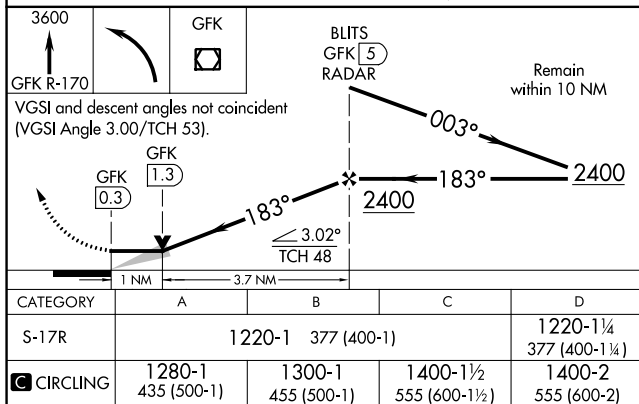
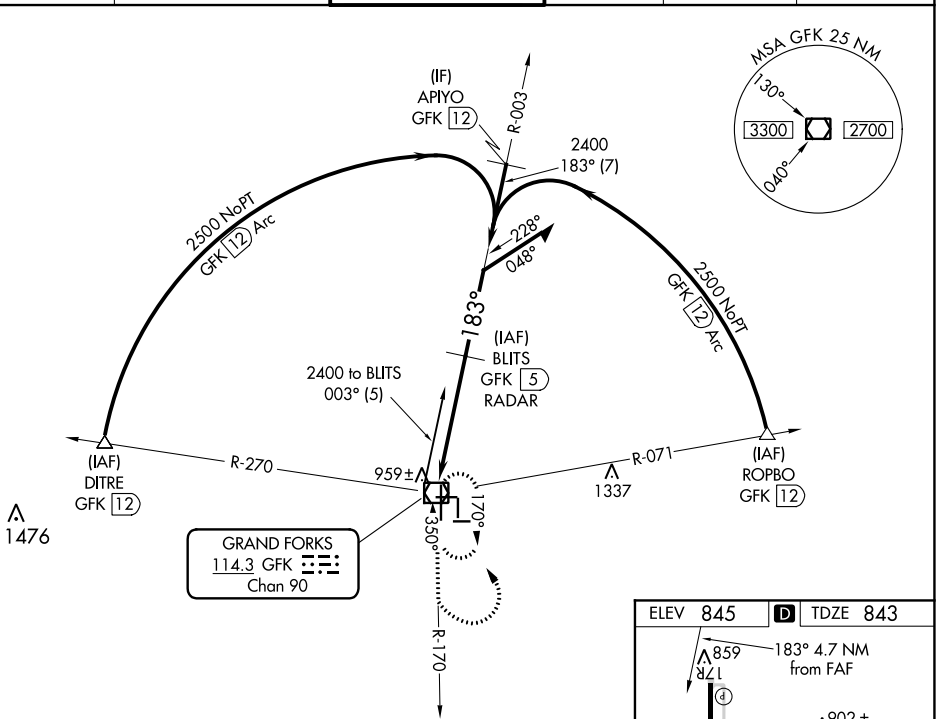


VOR RWY 17R
GRAND FORKS INTL (GFK)

T When local altimeter setting not received, use Crookston altimeter setting and increase all MDAs 80 feet; Increase Cat C/D visibility to 1 3/8 SM and Circling Cat C visibility 1/4 SM.
A VDP NA with Crookston altimeter setting.

ATIS 119.4	GRAND FORKS APP CON ★ 118.1 318.1	GRAND FORKS TOWER★ 118.4(CTAF) 0 350.35	GND CON 124.575	CLNC DEL 135.725	UNICOM 122.95
---------------	--------------------------------------	--	--------------------	---------------------	------------------



NC-1, 03 DEC 2020 to 31 DEC 2020