

WAAS CH 82018 W05A	APP CRS 050°	Rwy Idg TDZE 1224 Apt Elev 1232
--	------------------------	---

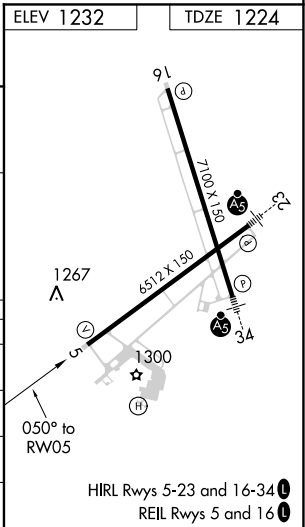
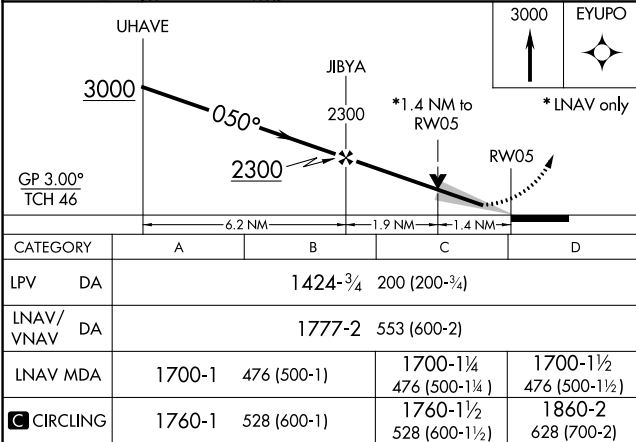
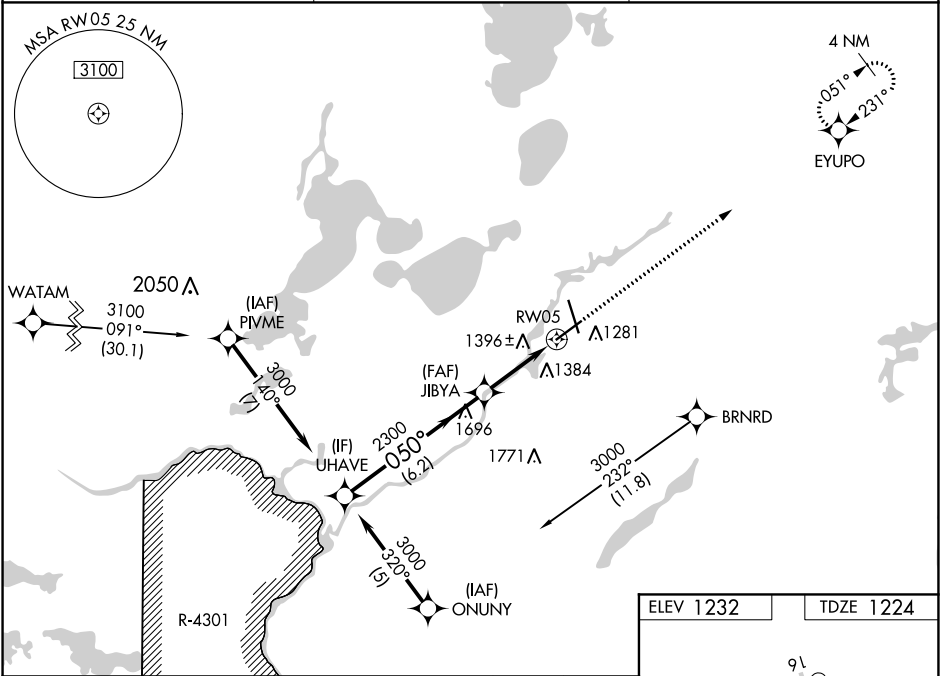
RNAV (GPS) RWY 5

BRAINERD LAKES RGNL (BRD)

⚠ Baro-VNAV NA when using Aikini altimeter setting. DME/DME RNP-0.3 NA. Procedure NA when R-4301 is active. For uncompensated Baro-VNAV systems, LNAV/VNAV NA below -17°C (2°F) or above 54°C (130°F). When local altimeter setting not received, use Aikini altimeter setting and increase all DA 52 feet and all MDA 60 feet, increase LPV and LNAV/VNAV visibility ½ mile all Cats, and LNAV Cats C and D visibility ¼ mile. VDP NA with Aikini altimeter setting.

MISSED APPROACH: Climb to 3000 direct EYUPO and hold.

ASOS 126.775	MINNEAPOLIS CENTER 118.05 239.0	UNICOM 122.7(CTAF) 0
------------------------	---	--------------------------------



NC-1, 03 DEC 2020 to 31 DEC 2020

NC-1, 03 DEC 2020 to 31 DEC 2020