

APP CRS	Rwy Idg	3268
139°	TDZE	868
	Apt Elev	869

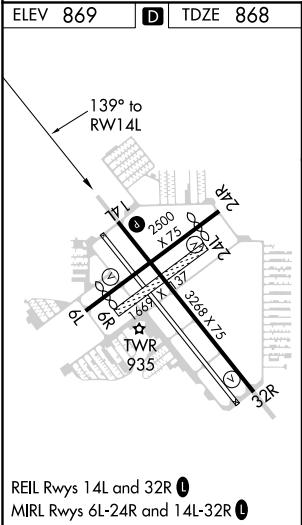
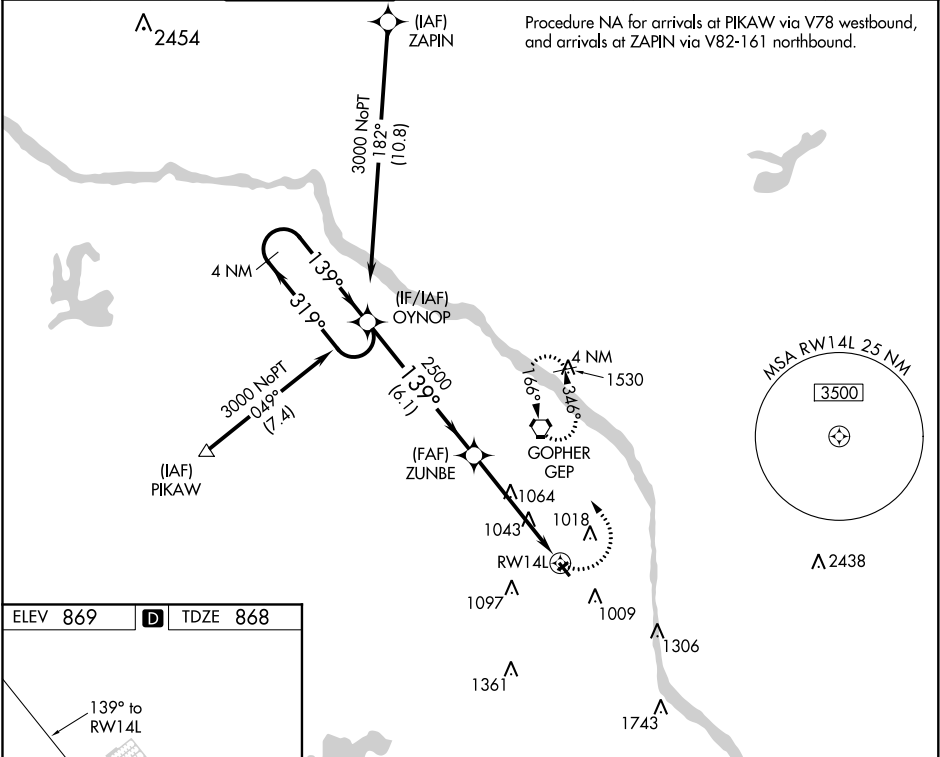
RNAV (GPS) RWY 14L
CRYSTAL (MIC)

RNP APCH.

When local altimeter setting not received, use Anoka County-Blaine (Janes Field) altimeter setting and increase all MDAs 40 feet and increase visibility Cat C ½ SM. Rwy 14L helicopter visibility reduction below ¾ SM NA. Circling NA to Rwy 6R and 24L. VDP NA when using Anoka County-Blaine (Janes Field) altimeter setting

MISSED APPROACH:
Climbing left turn to 2700
direct GEP VORTAC and
hold.

ATIS 124.475	MINNEAPOLIS APP CON 126.5 335.65	CRYSTAL TOWER ★ 120.7 (CTAF) 0	GND CON 121.6	CLNC DEL 121.6	MINNEAPOLIS CLNC DEL 121.6 (When tower closed)	UNICOM 122.95
------------------------	---	--	-------------------------	--------------------------	---	-------------------------



4 NM Holding Pattern OYNOP				VGSI and descent angles not coincident (VGSI Angle 4.00/TCH 30).		2700	GEP
3000 ← 319° 139° →				ZUNBE		1.1 NM to RW14L	
				3.04° TCH 40		RW14L	
				2500			
				6.1 NM		3.8 NM	1.1
CATEGORY	A		B	C		D	
LNAV MDA	1380-1		512 (600-1)	1380-1½ 512 (600-1½)		1380-1¾ 512 (600-1¾)	
CIRCLING	1380-1		511 (600-1)	1380-1½ 511 (600-1½)		1460-2 591 (600-2)	

NC-1, 03 DEC 2020 to 31 DEC 2020

NC-1, 03 DEC 2020 to 31 DEC 2020