

WAAS CH <b>61212</b> <b>W13A</b>	APP CRS <b>129°</b>	Rwy Idg <b>5500</b> TDZE <b>2020</b> Apt Elev <b>2032</b>
--	------------------------	---

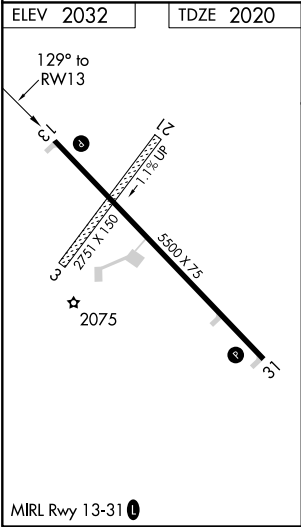
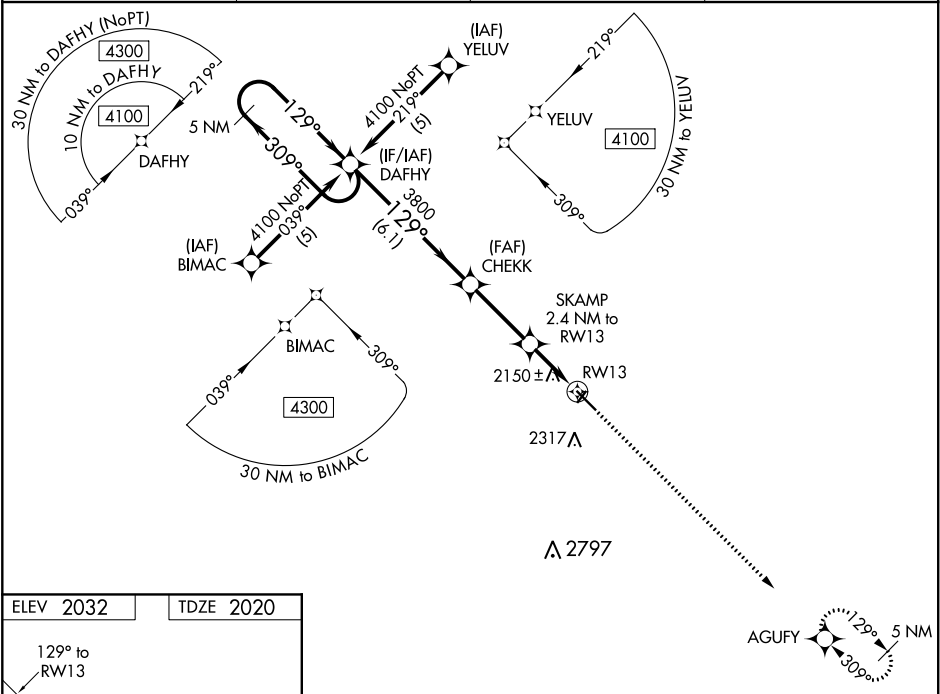
RNAV (GPS) RWY 13

WINNER RGNL (ICR)

DME/DME RNP-0.3 NA. For uncompensated Baro-VNAV systems, LNAV/VNAV NA below -19°C (-2°F) or above 54°C (130°F). Baro-VNAV and VDP NA when using Valentine altimeter setting. When local altimeter setting not received, use Valentine, NE altimeter setting and increase all DA/MDA 240 feet; increase LPV all Cats visibility ¾ mile, LNAV/VNAV all Cats visibility 1 mile, LNAV Cat C visibility ¾ mile, Circling Cat B visibility ¾ mile and Cat C visibility 1 mile. Circling NA to Rwy's 3 and 21.

MISSED APPROACH: Climb to 4100 direct AGUFY and hold.

ASOS <b>126.775</b>	MINNEAPOLIS CENTER <b>125.1 269.1</b>	GCO <b>121.725</b>	UNICOM <b>122.8 (CTAF) 0</b>
------------------------	--	-----------------------	---------------------------------



VGSI and RNAV glidepath not coincident.			
5 NM Holding Pattern			
4100 ← 309° → 129° → 3800 → 2800 → 2680 → 2580 → 2480 → 2370 → 2270 → 2170 → 2075			
GP 3.00° TCH 38			
6.1 NM 3 NM 1 NM 1.4 NM			
CATEGORY	A	B	C
LPV DA	2270-1	250 (300-1)	NA
LNAV/VNAV DA	2456-1½	436 (500-1½)	NA
LNAV MDA	2480-1	460 (500-1)	2480-1¼ 460 (500-1¼)
CIRCLING	2580-1 548 (600-1)	2680-1 648 (700-1)	2680-1¾ 648 (700-1¾)