

WAAS CH 90218 W288	APP CRS 278°	Rwy Idg TDZE Apt Elev	5000 906 906
--	------------------------	-----------------------------	---

RNAV (GPS) RWY 28L

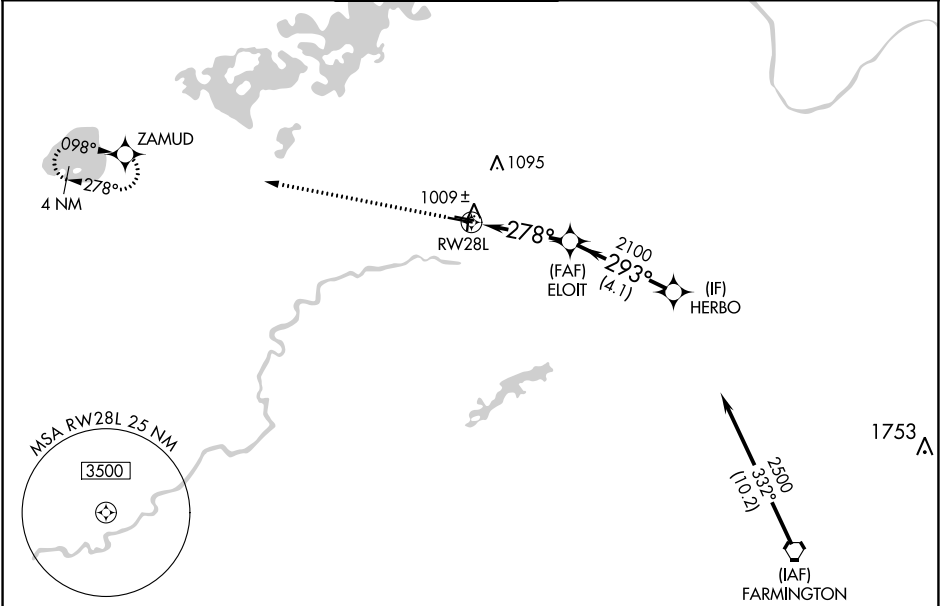
FLYING CLOUD (F^CM)

⚠

For uncompensated Baro-VNAV systems, LNAV/VNAV NA below -16°C (2°F) or above 54°C (130°F). When local altimeter setting not received, use Minneapolis-St Paul Intl/Wold-Chamberlain altimeter setting and increase all DA 34 feet and all MDA 40 feet, increase LNAV Cats C and D visibility 1⁄8 mile. DME/DME RNP-0.3 NA. Night Landing: Rwy 18/36 NA. Helicopters visibility reduction below 3⁄4 SM NA.

MISSED APPROACH: Climb to 2700 direct ZAMUD and hold.

ATIS 124.9	MINNEAPOLIS APP CON 134.7 284.7	FLYING CLOUD TOWER ★ 119.15 (CTAF) ①	GND CON 121.7	CLNC DEL 121.7 (When twr closed)	UNICOM 122.95
----------------------	---	--	-------------------------	---	-------------------------



ELEV 906

TDZE 906

HIRL Rwy 10R-28L ①

REIL Rwy 10L, 28R

REIL Rwy 18, 28L, and 36 ①

MIRL Rwy 10L-28R and 18-36 ①

Procedure NA for arrivals on FGT VORTAC
airway radials 258 CW 011.

2700 ↑

ZAMUD

VGSI and RNAV glidepath not coincident
(VGSI Angle 3.00/TCH 44).

CATEGORY	A	B	C	D
LPV DA	1156-1 250 (300-1)			
LNAV/VNAV DA	1198-1 292 (300-1)			
LNAV MDA	1280-1	374 (400-1)	1280-1½	374 (400-1½)
④ CIRCLING	1320-1 414 (500-1)	1440-1 534 (600-1)	1440-1½ 534 (600-1½)	1540-2 634 (700-2)

NC-1, 03 DEC 2020 to 31 DEC 2020

NC-1, 03 DEC 2020 to 31 DEC 2020