

WAAS CH 42519 W10B	APP CRS 098°	Rwy Idg 5000 TDZE 905 Apt Elev 906
----------------------------------------	------------------------	---------------------------------------------------------------

RNAV (GPS) RWY 10R
FLYING CLOUD (FCM)

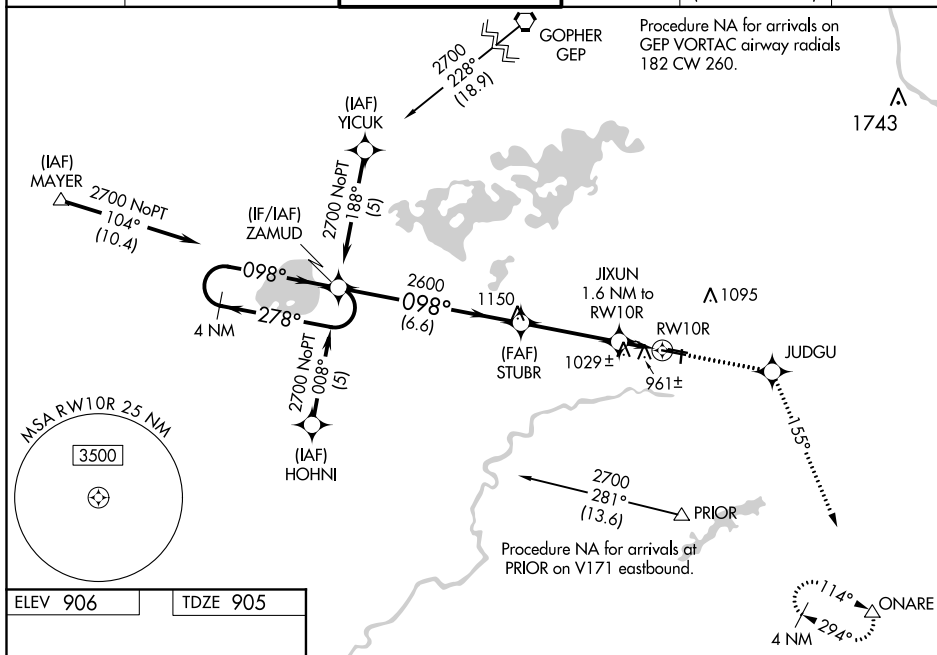
V Baro-VNAV NA when using Minneapolis-St Paul Intl/Wold Chamberlain altimeter setting. For uncompensated Baro-VNAV systems, LNAV/VNAV NA below -1.6°C (4°F) or above 47°C (116°F). DME/DME RNP-0.3 NA. When local altimeter setting not received, use Minneapolis-St Paul Intl/Wold Chamberlain altimeter setting and increase all DA 34 feet and all MDA 40 feet and increase LNAV Cat C visibility $\frac{1}{4}$ mile. For inoperative MALSR increase LNAV Cat D visibility to $\frac{1}{4}$. Night Landing: Rwy 18/36 NA.

MALSR



MISSED APPROACH:
Climb to 3000 direct
JUDGU and on track
155° to ONARE and
hold.

ATIS 124.9	MINNEAPOLIS APP CON 134.7 284.7	FLYING CLOUD TOWER ★ 119.15 (CTAF) 0	GND CON 121.7	CLNC DEL 121.7 (When twr closed)	UNICOM 122.95
----------------------	-------------------------------------------	------------------------------------------------	-------------------------	-----------------------------------------------	-------------------------



HIRL Rwy 10R-28L

REIL Rwys 10L, 28R

REIL Rwys 18, 28L, and 36

MIRL Rwys 10L-28R and 18-36

[illegible]