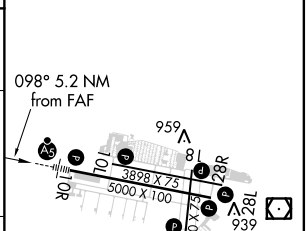
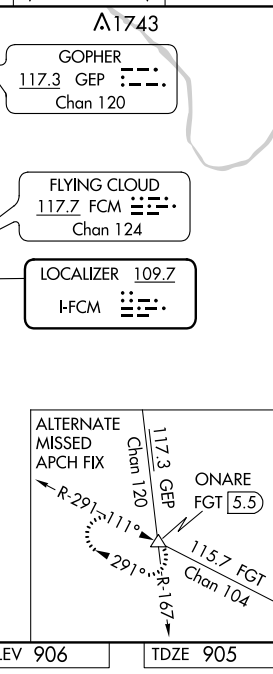


ILS or LOC RWY 10R
FLYING CLOUD (FCM)

- MALSR

MISSED APPROACH: Climb to 1800 then climbing right turn to 2700 direct FCM VOR/DME and hold, continue climb-in-hold to 2700.

CLNC DEL 121.7 (When twr closed)	UNICOM 122.95
---	-------------------------



TWR ☆ 988 ± 36
 943
 HIRL Rwy 10R-28L
 REIL Rwys 10L, 28R
 REIL Rwys 18, 28L, and 36
 MIRL Rwys 10L-28R and 18-36
 FAF to MAP 5.2 NM

Knots	60	90	120	150	180
Min:Sec	5:12	3:28	2:36	2:05	1:44