

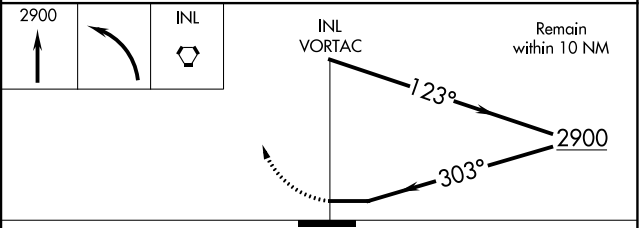
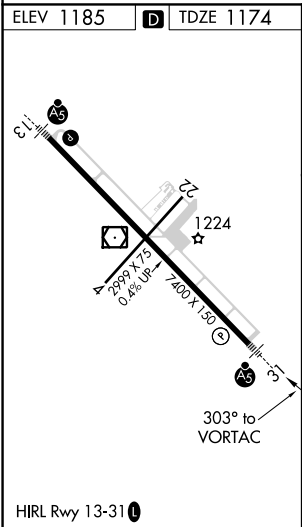
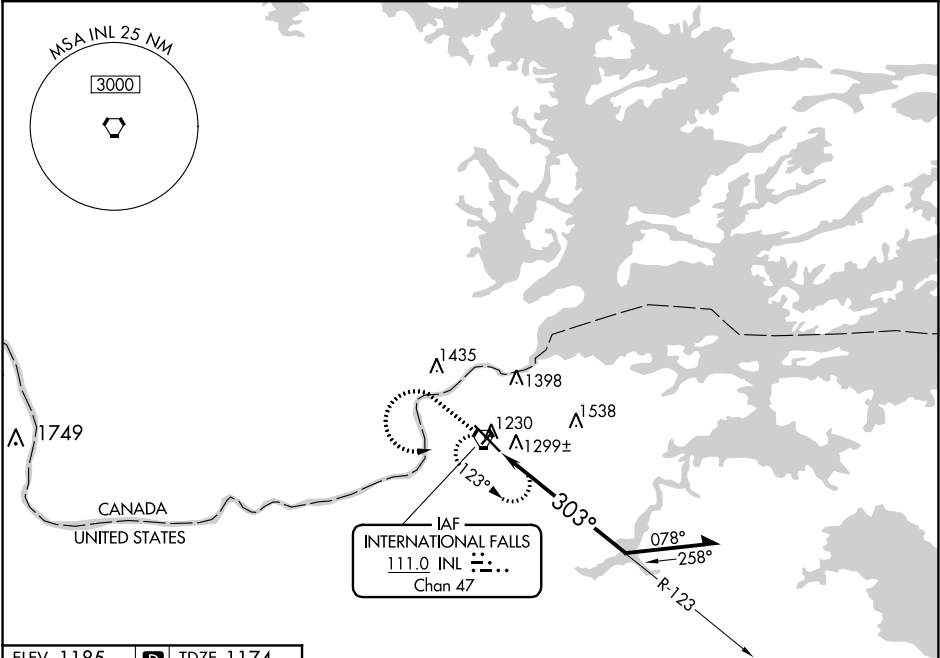
VORTAC INL	APP CRS	Rwy Idg	7400
111.0	303°	TDZE	1174
Chan 47		Apt Elev	1185

VOR RWY 31

FALLS INTL-EINARSON FIELD (INL)

<div><div>V</div><div>-31°C</div></div>	For inoperative MALSR, increase S-31 Cat D visibility to 1¼. Circling to Rwy 4-22 NA at night.	<div><div>MALSR</div><div></div></div>	MISSED APPROACH: Climb to 2900 then left turn direct INL VORTAC and hold.
---	--	--	---

ASOS 120.0	MINNEAPOLIS CENTER 120.9 377.1	UNICOM 122.8 (CTAF)
---------------	-----------------------------------	------------------------



CATEGORY	A	B	C	D
S-31	1600-½	426 (500-½)	1600-¾	1600-1
			426 (500-¾)	426 (500-1)
CIRCLING	1620-1	1680-1	1680-1½	1840-2
	435 (500-1)	495 (500-1)	495 (500-1½)	655 (700-2)