

WAAS CH 78406 W31A	APP CRS 313°	Rwy Idg 7400 TDZE 1166 Apt Elev 1185
--	------------------------	---

RNAV (GPS) RWY 31

FALLS INTL-EINARSON FIELD (INL)

▼

▲

W

☼

-31°C

When local altimeter setting not received, use Baudette altimeter setting and increase all DAs 127 feet, and LPV and LNAV/VNAV visibility ½ mile all Cats, increase all MDAs 140 feet and LNAV Cat C visibility ½ mile and Circling Cat C and D visibility ¼ mile. For inoperative MALSR when using Baudette altimeter setting, increase LPV visibility ½ mile all Cats. For inoperative MALSR, increase LPV visibility ½ mile all Cats, inoperative table does not apply to LNAV Cat D. VDP NA when using Baudette altimeter setting. Baro-VNAV NA when using Baudette altimeter setting. Circling to Rwy 4-22 NA at night. For uncompensated Baro-VNAV systems, LNAV/VNAV NA below -17°C (2°F) or above 47°C (116°F). DME/DME RNP-0.3 NA.

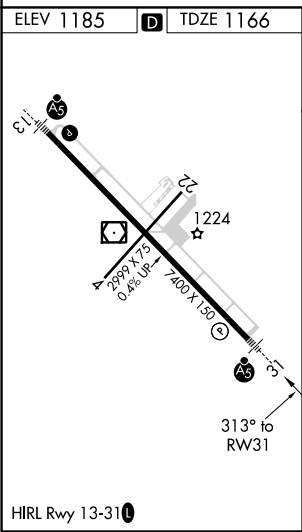
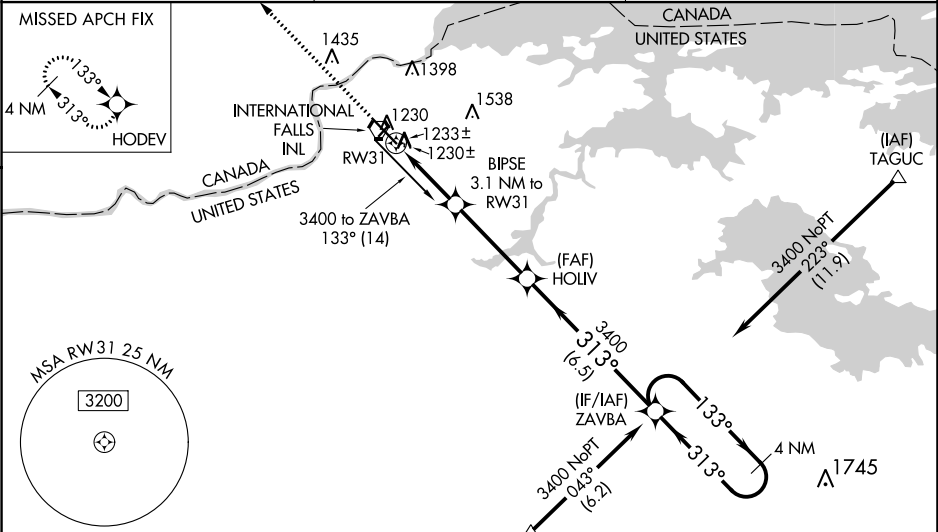
MALSR

AS

⬆

MISSED APPROACH: Climb to 3300 direct HODEV and hold.

ASOS 120.0	MINNEAPOLIS CENTER 120.9 377.1	UNICOM 122.8 (CTAF) 1
----------------------	--	---------------------------------



3300	HODEV	BIPSE	3.1 NM to RW31	HOLIV	ZAVBA	4 NM Holding Pattern
*LNAV only.		*0.9 NM to RW31				
		RW31				
		2200*				
		0.9	2.2 NM	3.7 NM	6.5 NM	
CATEGORY	A	B	C	D		
LPV DA		1462-1½	296 (300-½)			
LNAV/VNAV DA		1500-¾	334 (400-¾)			
LNAV MDA		1500-½	334 (400-½)			
					1500-1	334 (400-1)
CIRCLING	1620-1	1680-1	1680-1½	1780-2		
	435 (500-1)	495 (500-1)	495 (500-1½)	595 (600-2)		