
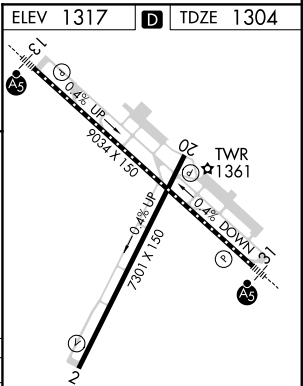
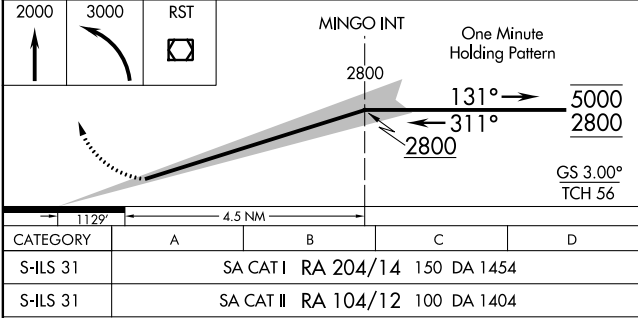
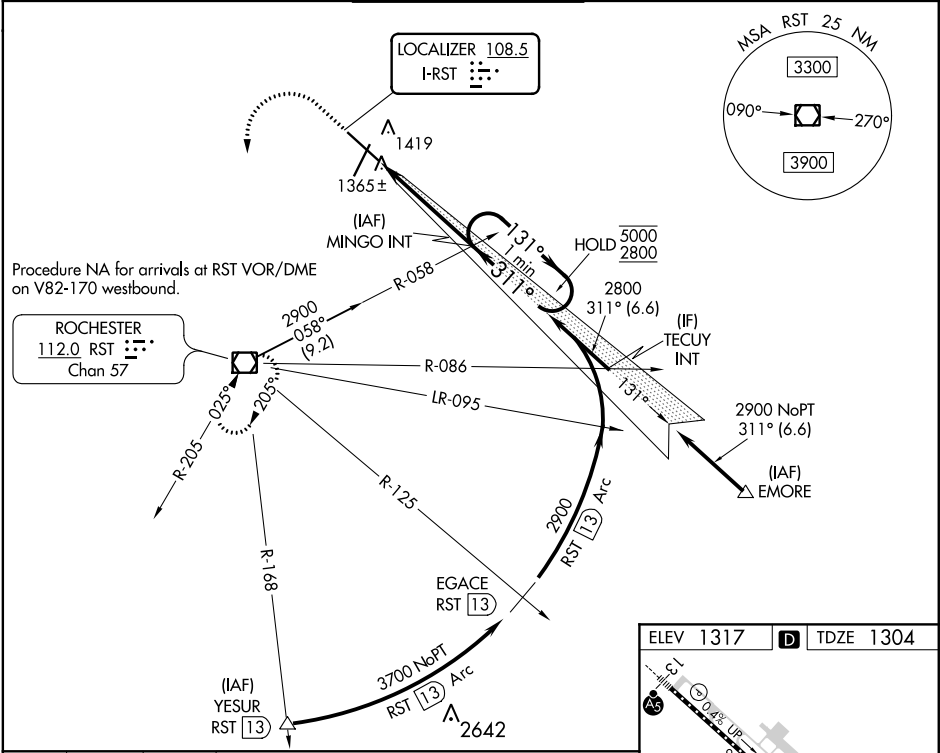


LOC I-RST <b>108.5</b>	APP CRS <b>311°</b>	Rwy Idg <b>9033</b> TDZE <b>1304</b> Apt Elev <b>1317</b>
---------------------------	------------------------	---

ILS Z RWY 31 (SA CAT I & II)  
ROCHESTER INTL (RST)

<b>T</b> <b>ASR</b> SA CAT I : Requires specific OPSPEC, MSPEC, or LOA approval and use of HUD to DH. SA CAT II : Reduced Lighting: Requires specific OPSPEC, MSPEC, or LOA approval and use of autoland or HUD to touchdown. Procedure NA when tower closed.	<b>MALSR</b> 	<b>MISSED APPROACH:</b> Climb to 2000 then climbing left turn to 3000 direct RST VOR/DME and hold.
---	---	--

<b>ATIS</b> <b>120.5</b>	<b>ROCHESTER APP CON*</b> <b>119.8 251.125</b>	<b>ROCHESTER TOWER*</b> <b>118.3 (CTAF) 257.8</b>	<b>GND CON</b> <b>121.9</b>	<b>UNICOM</b> <b>122.95</b>
-----------------------------	---	--	--------------------------------	--------------------------------



**SA CATEGORY I & II ILS - SPECIAL AIRCREW & AIRCRAFT CERTIFICATION REQUIRED**

TDZ/CL Rwy 13 and 31  
HIRL Rwy 13-31  
MIRL Rwy 2-20  
REIL Rwy 2 and 20

NC-1, 03 DEC 2020 to 31 DEC 2020

NC-1, 03 DEC 2020 to 31 DEC 2020