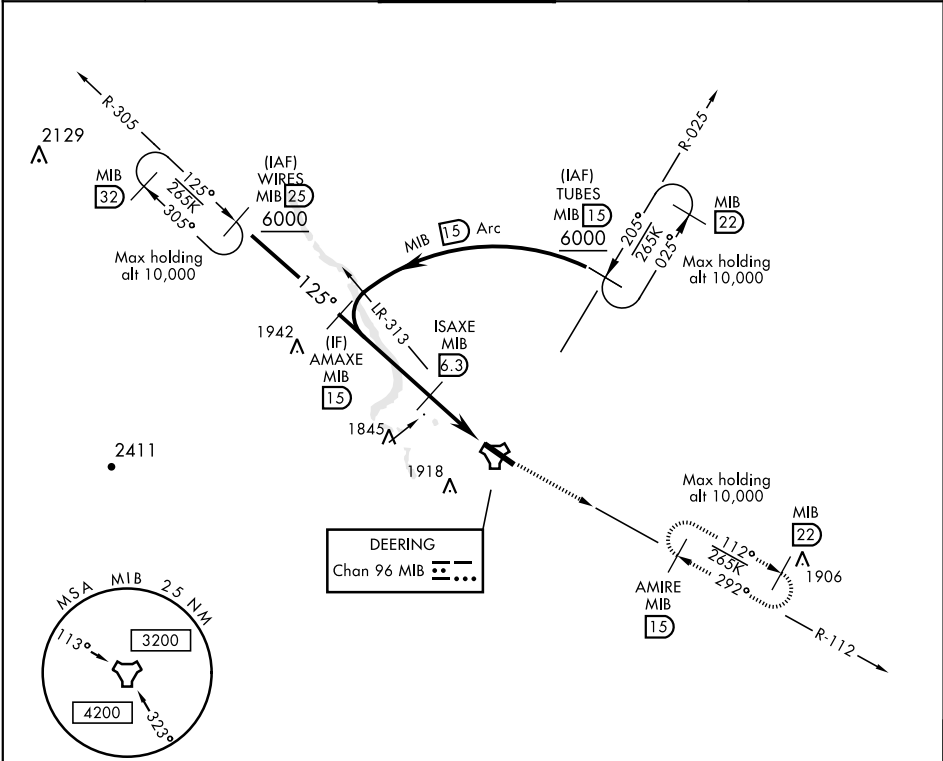


TACAN Y RWY 12

TACAN Chan 96	APCH CRS 125°	Rwy ldg 13,198 TDZE 1666 Arpt Elev 1666	AL-5013 [USAF]	MINOT AFB (KMIB)
* When ALS inop, increase CAT AB RVR to 55 vis to 1 mile, CAT CDE vis to 1 ¼ miles. ** Circling not authorized N of Rwy 12-30.			ALS F-1 	MISSED APPROACH: Climb to 5000 via MIB TACAN R-112 direct AMIRE and hold.
ATIS ★ 278.8	MINOT APP CON 119.6 363.8	MINOT TOWER ★ 120.65 253.5	GND CON 134.0 275.8	CLNC DEL 326.2



EMERG SAFE ALT 100 NM 4700

AMAXE MIB R-305		ISAXE		5000 MIB R-112	AMIRE MIB 15	ELEV 1666	TDZE 1666
5000		3200		2.3	1.5	TACAN	
2.57° TCH 47		125°		4.8 NM		0.6	
CATEGORY	A	B	C	D	E	<p>The diagram illustrates the TACAN Y RWY 12 navigation system. It features several Minimum Enroute Altitudes (MEAs) and Maximum Holding Altitudes (MHAs). Key elements include:</p> <ul style="list-style-type: none">MEAs: 2129, 1942, 1845, 1918, 2411, 1906.MHAs: 10,000 (multiple locations).MIB Arcs: 32, 25, 15, 6.3, 2.3, 1.5, 2.5 NM.Navigation Aids: DEERING (Chan 96 MIB), AMIRE (MIB 15), TACAN (Y RWY 12).Altitudes: 6000, 3200, 4200, 5000, 3200, 1769.Angles: 125°, 305°, 205°, 025°, 112°, 292°, 2.57°, 113°, 323°.Distances: 4.8 NM, 0.6 NM, 1.3 NM, 1.2 NM.	
S-12*	2100/24	434 (500-½)	2100/40	434	(500-¾)		
CIRCLING**	2120-1 454 (500-1)	2140-1 474 (500-1)	2180-1½ 514 (600-1½)	2220-2	554 (600-2)		

TACAN Y RWY 12