

## JAL-5013 [USAF]

MINOT AFB (KMIB)

TACAN MIB Chan <b>96</b>	APCH CRS <b>292°</b>	Rwy Idg <b>13,198</b> TDZE <b>1646</b> Arpt Elev <b>1666</b>
-----------------------------	-------------------------	--

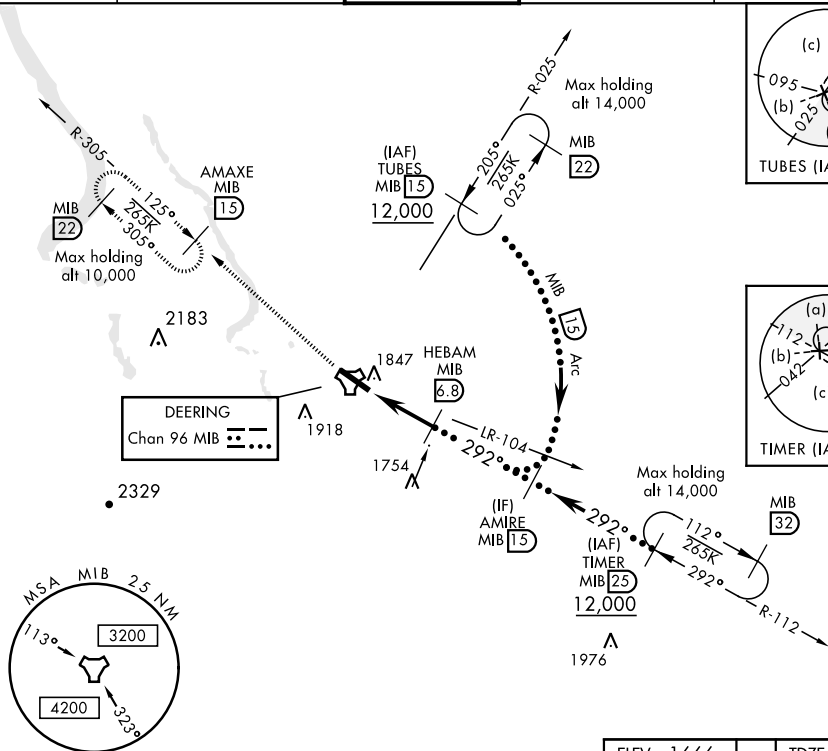
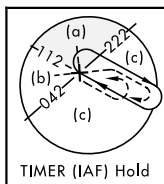
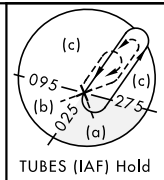
\* When ALS inop, increase CAT CDE vis to 1 3/8 miles.

\*\* Circling not authorized N of Rwy 12-30.

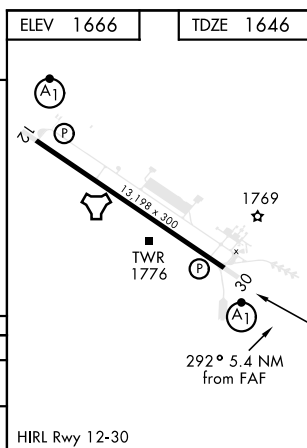
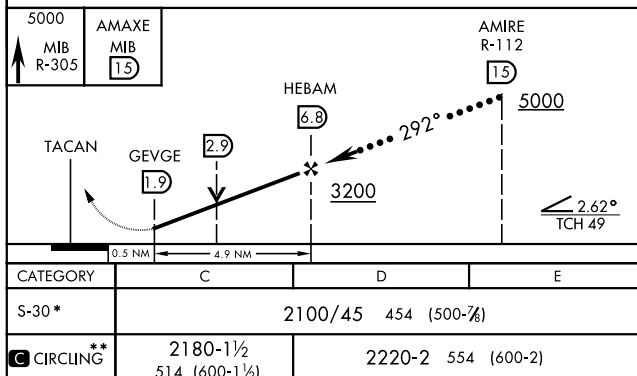
ALSF-1

MISSED APPROACH: Climb to 5000 via  
MIB TACAN R-305 direct AMAXE and hold.

ATIS ★ 278.8	MINOT APP CON 119.6 363.8	MINOT TOWER ★ 120.65 253.5	GND CON 134.0 275.8	CLNC DEL 326.2
-----------------	------------------------------	-------------------------------	------------------------	-------------------



EMERG SAFE ALT 100 NM 4700



MINOT, NORTH DAKOTA

48°25'N-101°21'W

MINOT AFB (KMIB)

Orig 21JUL16

HI-TACAN Z RWY 30

NC-1, 03 DEC 2020 to 31 DEC 2020