

MINOT, NORTH DAKOTA

COPTER RNAV (GPS) RWY 12

WAAS CH 71280 W12A	APCH CRS 118°	Rwy ldg TDZE Arpt Elev	13,198 1666 1666
--------------------------	------------------	------------------------------	------------------------

AL-5013 (USAF)

MINOT AFB (KMIB)

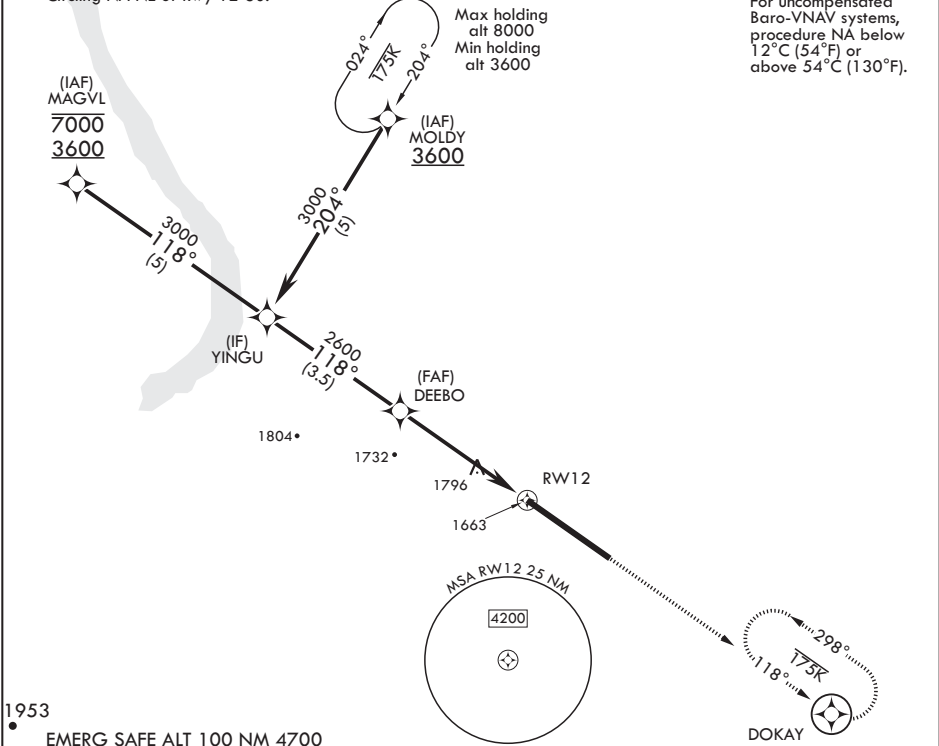
\* When ALS inop, increase CAT A RVR to 40, vis to 3/4 mile.  
\*\* When ALS inop, increase CAT A vis to 1 5/8 miles.  
\*\*\* When ALS inop, increase CAT A RVR to 55, vis to 1 mile.



MISSED APPROACH: Climb to 3600 direct DOKAY and hold.

ATIS ★ 278.8	APP CON 119.6 363.8	TOWER ★ 120.65 253.5	GND CON 134.0 275.8	CLNC DEL 326.2
-----------------	------------------------	-------------------------	------------------------	-------------------

\*\*\*\* Circling NA NE of Rwy 12-30.



1953  
EMERG SAFE ALT 100 NM 4700

YINGU	3000	118°	DEEBO	2600	1.5 NM to RWY 12	3.3 NM	RWY 12	3600	DOKAY	ELEV 1666	TDZE 1666
GP 2.50° TCH 48											
CATEGORY											
COPTER											
LPV DA*	1866/24 200 (200-1/4)										
RNAV/VNAV DA**	2077/60 411 (500-1 1/2)										
RNAV MDA***	2100/24 434 (500-1 1/2)										
CIRCLING****	2120-1 454 (500-1)										
HIRL all Rws											

MINOT, NORTH DAKOTA

48°25'N - 101°21'W

MINOT AFB (KMIB)

Orig 19JUL18

COPTER RNAV (GPS) RWY 12

NC-1, 03 DEC 2020 to 31 DEC 2020

NC-1, 03 DEC 2020 to 31 DEC 2020