


VORTAC RAP <b>112.3</b> Chan <b>70</b>	APP CRS <b>322°</b>	Rwy Idg <b>8701</b> TDZE <b>3160</b> Apt Elev <b>3204</b>
--	------------------------	---

VOR or TACAN RWY 32  
RAPID CITY RGNL (RAP)

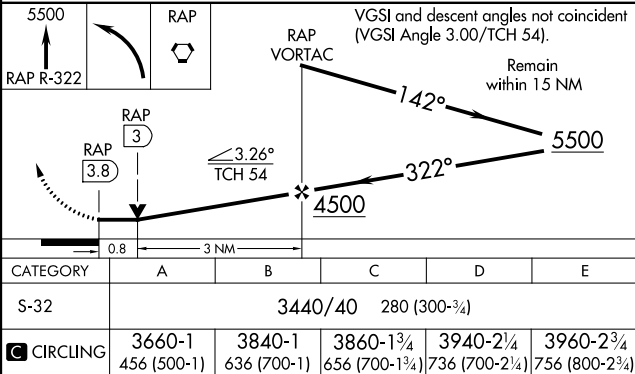
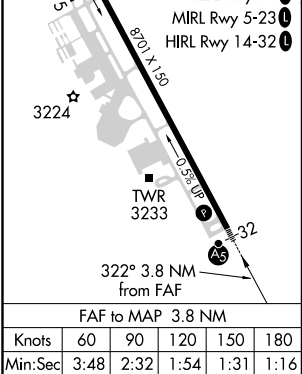
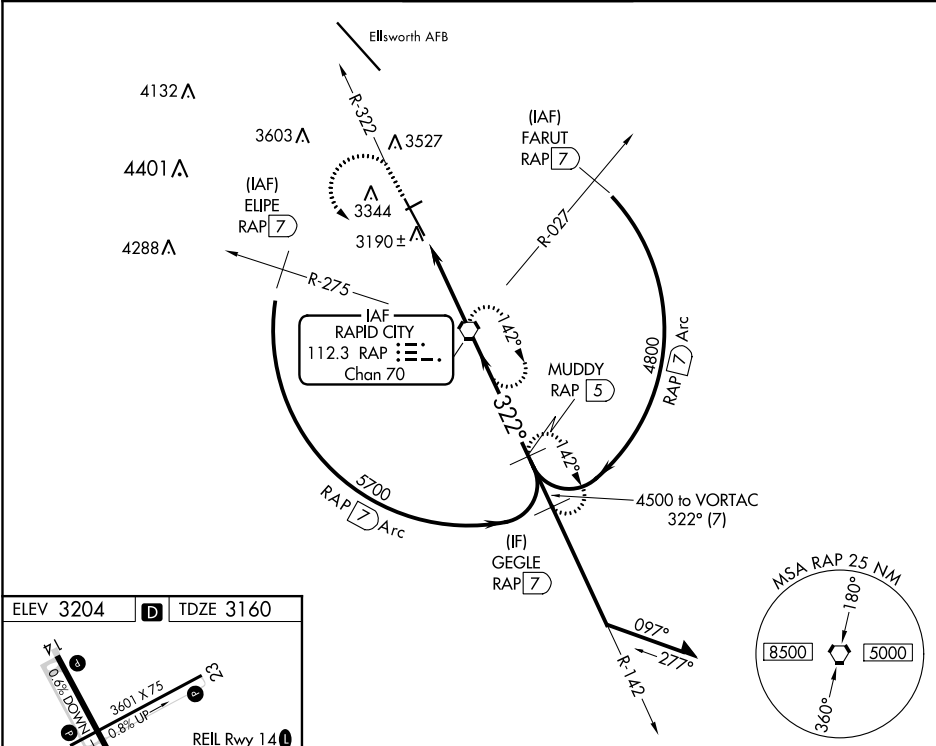
**⚠** For inoperative ALS, increase S-32 all Cats visibility to 1 SM.

MALSR



MISSED APPROACH: Climb to 5500 on RAP R-322 then left turn direct RAP VORTAC and hold. (TACAN aircraft continue on RAP R-142 to MUDDY/RAP 5 DME and hold SE, RT, 322° inbound.)

ASOS <b>118.525</b>	ELLSWORTH APP CON ★ <b>119.5 259.1</b>	RAPID CITY TOWER ★ <b>125.85 (CTAF) 0 257.8</b>	GND CON <b>121.9</b>	UNICOM <b>122.95</b>
------------------------	---	--	-------------------------	-------------------------



NC-1, 03 DEC 2020 to 31 DEC 2020

NC-1, 03 DEC 2020 to 31 DEC 2020