


WAAS CH 93717 W32A	APP CRS 324°	Rwy Idg TDZE Apt Elev	8701 3160 3204
--	------------------------	-----------------------------	---

RNAV (GPS) RWY 32
RAPID CITY RGNL (RAP)

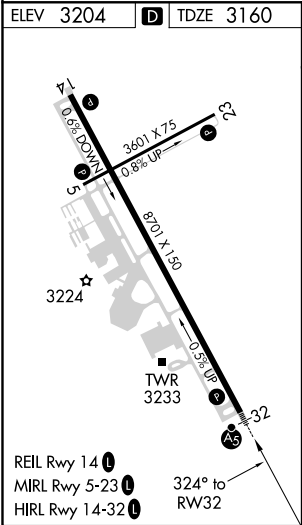
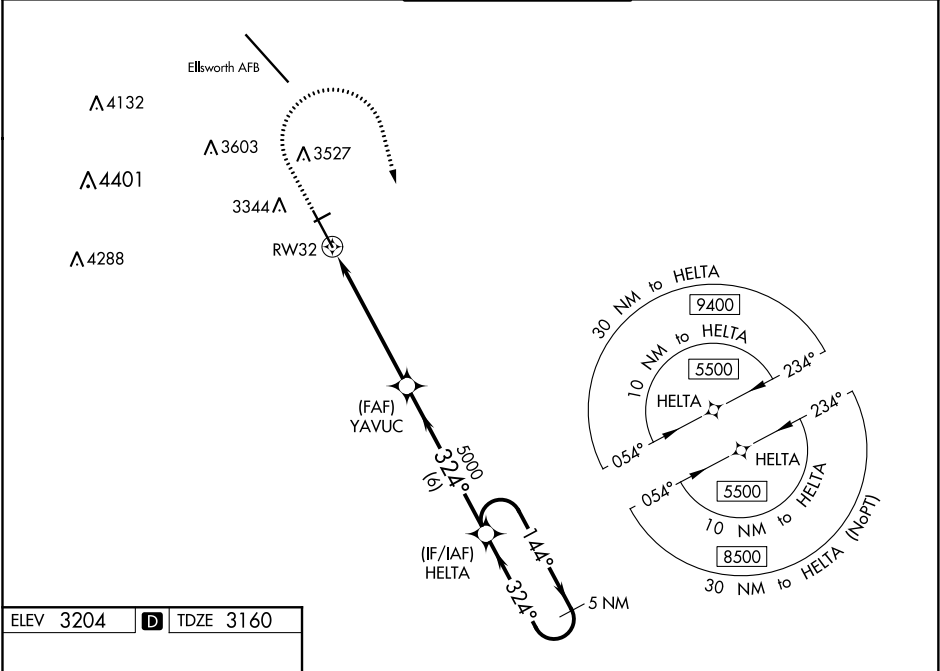
⚠ For uncompensated Baro-VNAV systems, LNAV/VNAV NA below -24°C (-11°F) or above 51°C (125°F). DME/DME RNP-0.3 NA. For inop ALS, increase LPV Cat E visibility to RVR 4000, LNAV/VNAV all Cats to RVR 4500 and LNAV Cat E to 1½ SM. # RVR 1800 authorized with use of FD or AP or HUD to DA.




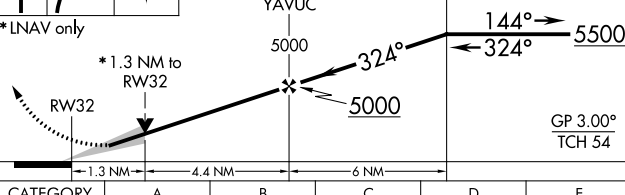

MALSR



MISSED APPROACH: Climb to 3700 then climbing right turn to 5500 direct HELTA and hold.

ASOS 118.525	ELLSWORTH APP CON ★ 119.5 259.1	RAPID CITY TOWER ★ 125.85 (CTAF) 0 257.8	GND CON 121.9	UNICOM 122.95
------------------------	---	--	-------------------------	-------------------------



3700	5500	HELTA				
						
* LNAV only						
						
CATEGORY	A	B	C	D	E	
LPV DA#	3360/24 200 (200-½)					
LNAV/VNAV DA	3410/24 250 (300-½)					
LNAV MDA	3620/24 460 (500-½)		3620/45 460 (500-¾)			
 CIRCLING	3660-1 456 (500-1)	3840-1 636 (700-1)	3860-1¾ 656 (700-1¾)	3940-2¼ 736 (800-2¼)	3960-2¾ 756 (800-2¾)	

NC-1, 03 DEC 2020 to 31 DEC 2020

NC-1, 03 DEC 2020 to 31 DEC 2020