

WAAS CH 99335 W30A	APP CRS 301°	Rwy Idg 3998 TDZE 2206 Apt Elev 2209
--	------------------------	---

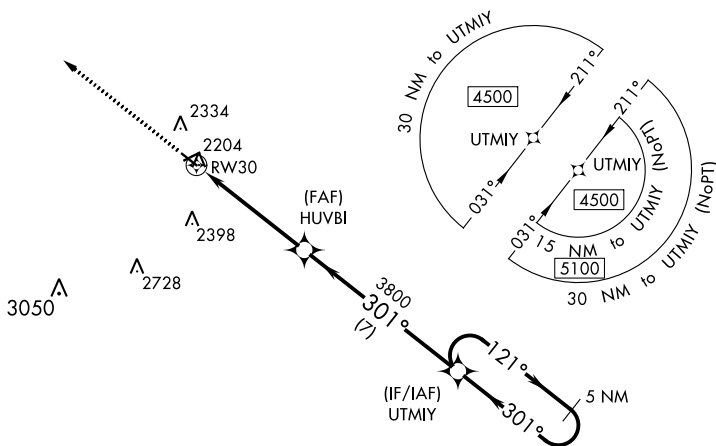
RNAV (GPS) RWY 30
PHILP (PHP)

PHILIP (PHP)

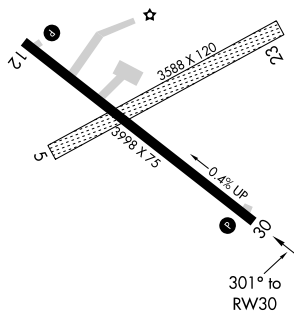
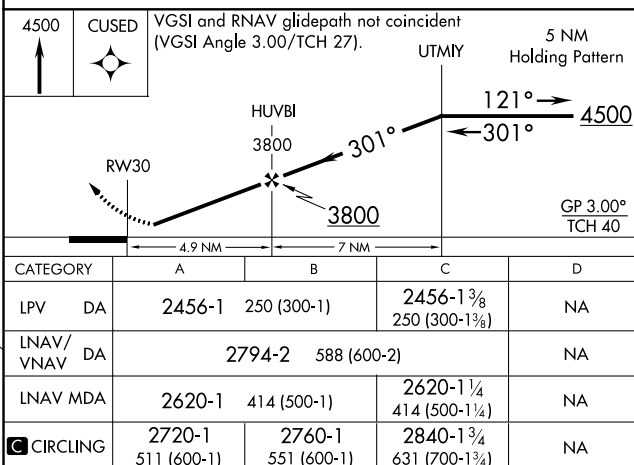
▼ DME/DME RNP-0.3 NA. When local altimeter setting not received, use Pierre altimeter setting and increase all DA 204 feet and MDA 220 feet and increase LPV all Cats visibility $\frac{1}{2}$ mile, increase LNAV/VNAV all Cats visibility 1 mile, increase LNAV Cat C visibility $\frac{1}{2}$ mile, and increase Circling Cat C visibility $\frac{3}{4}$ mile. Helicopter visibility reduction below 1 SM NA. Procedure NA at night. For uncompensated Baro-VNAV systems, LNAV/VNAV NA below -14°C (7°F) or above 54°C (130°F). Baro-VNAV NA when using Pierre altimeter setting.

MISSED APPROACH.
Climb to 4500 direct
CUSC and hold.

ASOS 118.375	DENVER CENTER 127.95 338.2	UNICOM 122.8 (CTAF) 0
------------------------	--------------------------------------	---------------------------------



ELEV 2209		TDZE 2206
-----------	--	-----------

MIRL Rwy 12-30 

RNAV (GPS) RWY 30