

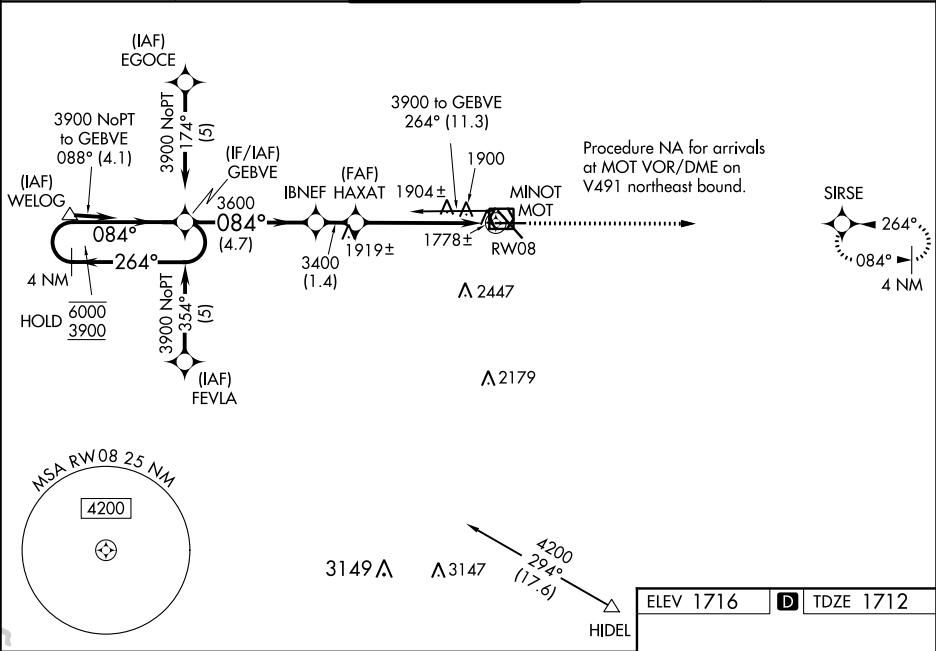
WAAS CH 97616 W08A	APP CRS 084°	Rwy Idg TDZE 1712 Apt Elev 1716
--	------------------------	---

RNAV (GPS) RWY 8

MINOT INTL (MOT)

RNP APCH.	<div><div>▼</div><div>▲</div></div> <div>Rwy 8 helicopter visibility reduction below ¾ SM NA. For uncompensated Baro-VNAV systems, LNAV/VNAV NA below -18°C or above 54°C.</div>	MISSED APPROACH: Climb to 3600 direct SIRSE and hold.

ASOS 118.725	MINOT APP CON * 119.6 363.8	MAGIC CITY TOWER * 118.2 (CTAF) 0 251.125	GND CON 121.9	UNICOM 122.95
------------------------	---------------------------------------	---	-------------------------	-------------------------



4 NM Holding Pattern		GEBVE		VGSi and RNAV glidepath not coincident (VGSi Angle 3.00/TCH 45).		3600	SIRSE
6000	← 264°	← 084° →	084°	IBNEF	HAXAT	*1.3 NM to RW08	*LNAV only.
3900				3600	3400	RW08	
GP 3.00° TCH 49		4.7 NM		1.4 NM	3.8 NM	1.3 NM	
CATEGORY	A	B	C	D			
LPV DA	1991-1 279 (300-1)						
LNAV/ VNAV DA	2218-1¾ 506 (600-1¾)						
LNAV MDA	2160-1	448 (500-1)	2160-1¾ 448 (500-1¾)	2160-1½ 448 (500-1½)			
CIRCLING	2200-1	484 (500-1)	2280-1½ 564 (600-1½)	2280-2 564 (600-2)			

