

MINOT, NORTH DAKOTA

AL-635 (FAA)

20030

WAAS CH 66099 W31A	APP CRS 312°	Rwy Idg 7700 TDZE 1679 Apt Elev 1716
--	------------------------	---

RNAV (GPS) RWY 31
MINOT INTL (MOT)

RNP APCH.

T
A For uncompensated Baro-VNAV systems, LNAV/VNAV NA below -18°C or above 54°C. For inop ALS increase LNAV/VNAV visibility to RVR 4500.

MALSR



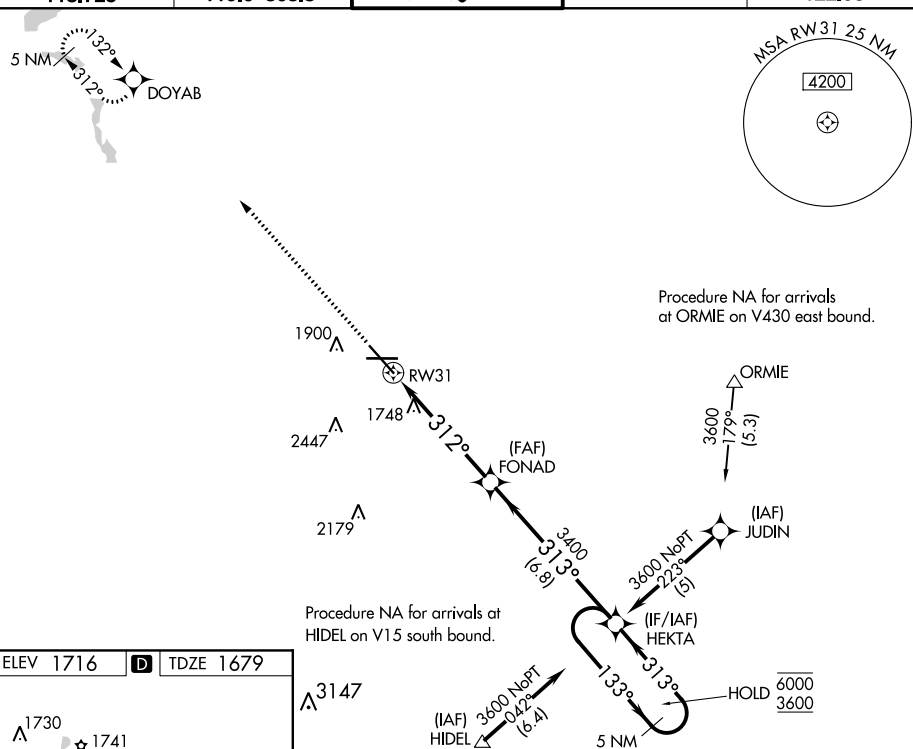
MISSED APPROACH: Climb to 4500 direct DOYAB and hold.

ASOS
118.725

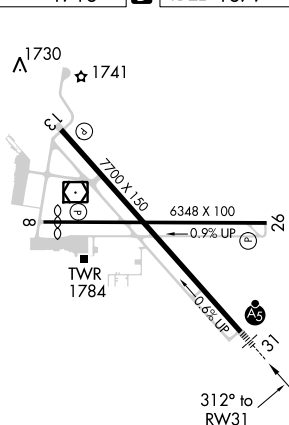
MINOT APP CON
119.6 363.8

MAGIC CITY TOWER ★
118.2(CTAF) L 251.125

GND CON
121.9

UNICOM
122.95

ELEV 1716	D	TDZE 1679
-----------	----------	-----------



REIL Rwy 13
REIL Rwy 8 and 26 **L**
HIRL Rwy 8-26 and 13-31 **L**

MINOT, NORTH DAKOTA

Amdt 1C 30JAN20

48°15'N-101°17'W

MINOT INTL (MOT)

RNAV (GPS) RWY 31

NC-1, 03 DEC 2020 to 31 DEC 2020