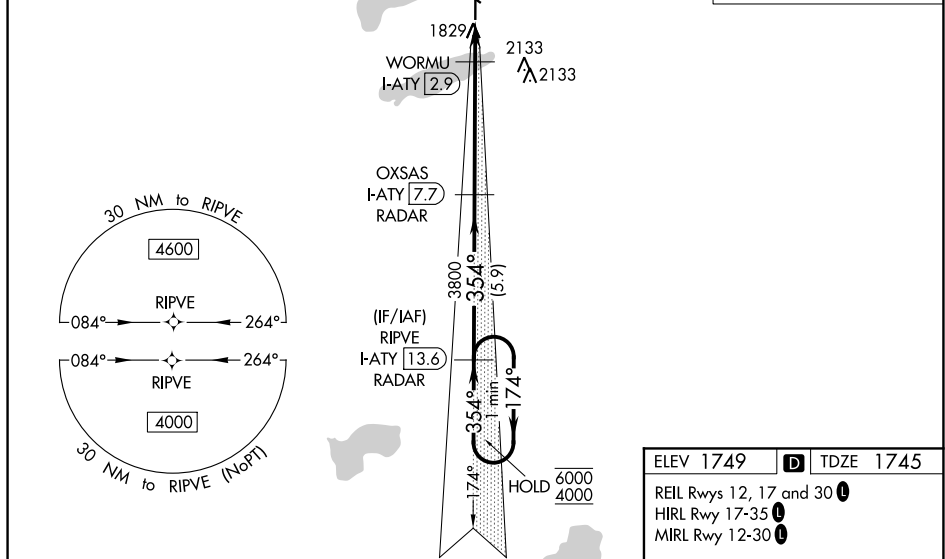


ILS or LOC RWY 35  
WATERTOWN RGNL (ATY)

**MISSED APPROACH:** Climb to 2500 then climbing left turn to 4500 on heading 330° and ATY R-288 to WICKA/ATY 15 DME and hold.

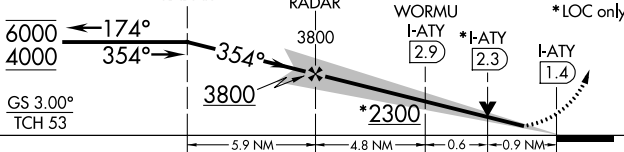


### One Minute Holding Pattern

RIPVE  
I-ATY 13.6  
RADAR

OXSAS  
I-ATY 7.7  
RADAR

2500 ↑	4500 hdg 330°	ATY R-288	WICKA △
-----------	---------------------	--------------	------------



CATEGORY	A	B	C	D
S-ILS 35	1945-½ 200 (200-½)			
S-LOC 35	2080-½ 335 (400-½)			
<b>C</b> CIRCLING	2260-1 511 (600-1)		2500-2¼ 751 (800-2¼)	2500-2½ 751 (800-2½)