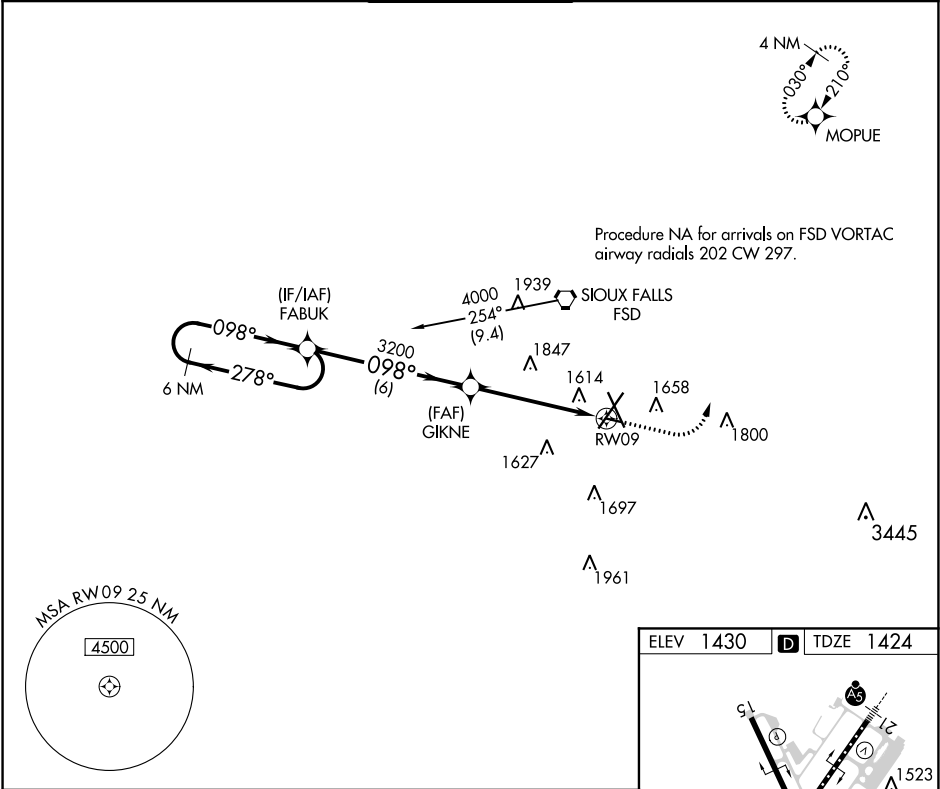


APP CRS 098°	Rwy Idg 3148 TDZE 1424 Apt Elev 1430
------------------------	---

RNAV (GPS) RWY 9

JOE FOSS FIELD (FSD)

RNP APCH.		MISSED APPROACH: Climb to 2500 then climbing left turn to 4000 direct MOPUE WP and hold.	
ASR Rwy 9 helicopter visibility reduction below ¾ SM NA.			
ATIS 126.6	SIOUX FALLS APP CON* 125.8 284.725	SIOUX FALLS TOWER* 118.3 (CTAF) 257.8	GND CON 121.9 348.6
		UNICOM 122.95	



6 NM Holding Pattern FABUK 4000 ← 278° 098° →		GIKNE 2500 4000 MOPUE	
3200 3.27° TCH 40 1.2 NM to RW09 RW09		1523 1519 TWR 1567 33 1470 899 X 130 3148 X 75 27 33	
CATEGORY	A	B	C
LNAV MDA	1880-1	456 (500-1)	NA
CIRCLING	1960-1 530 (600-1)	1980-1 550 (600-1)	NA