

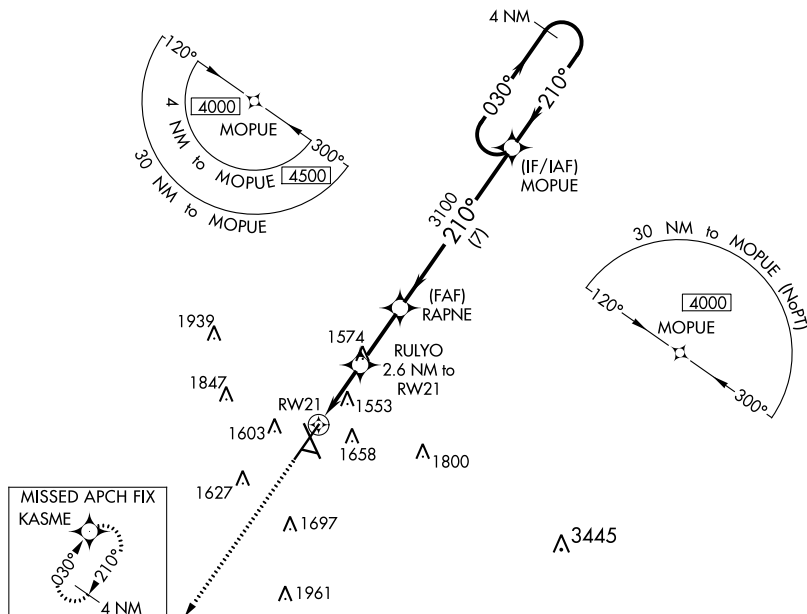
WAAS CH 99323 W21A	APP CRS 210°	Rwy Idg 8999 TDZE 1430 Apt Elev 1430
--	------------------------	---

RNAV (GPS) RWY 21
JOE FOSS FIELD (FSD)

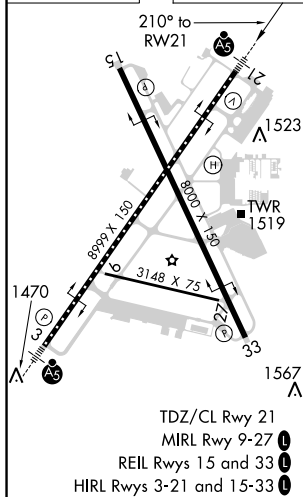
MISSED APPROACH:
Climb to 4000 direct
KASME and hold.

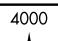
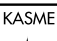
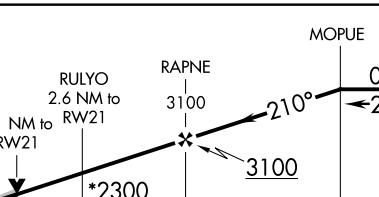
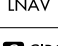
For uncompensated Baro-VNAV systems, LNAV/VNAV NA below -22°C (-7°F) or above 54°C (130°F). DME/DME RNP-0.3 NA. For inop ALS, increase LPV all Cats visibility to RVR 4000 and LNAV/VNAV all Cats visibility to RVR 4500.

ATIS 126.6	SIoux FALLS APP CON★ 125.8 284.725	SIoux FALLS TOWER★ 118.3 (CTAF) 0 257.8	GND CON 121.9 348.6	UNICOM 122.95
---------------	---------------------------------------	--	------------------------	------------------



ELEV 1430	D	TDZE 1430
-----------	----------	-----------



 					
*LNAV only. RW21 *1.1 NM to RW21 RULYO 2.6 NM to RW21 RAPNE 3100 *2300 3100 GP 3.00° TCH 49°					
CATEGORY		A	B	C	D
LPV	DA	1630/18		200 (300-½)	
LNAV/ VNAV	DA	1704/24		274 (300-½)	
LNAV	MDA	1820/24 390 (400-½)		1820/35 390 (400-¾)	
 CIRCLING		1960-1 530 (600-1)	1980-1 550 (600-1)	2060-1¾ 630 (700-1¾)	2200-2½ 770 (800-2½)