

| | | |
|--|------------------------|---|
| WAAS CH 90235 W15A | APP CRS 150° | Rwy Idg 8000 TDZE 1429 Apt Elev 1430 |
|--|------------------------|---|

RNAV (GPS) RWY 15

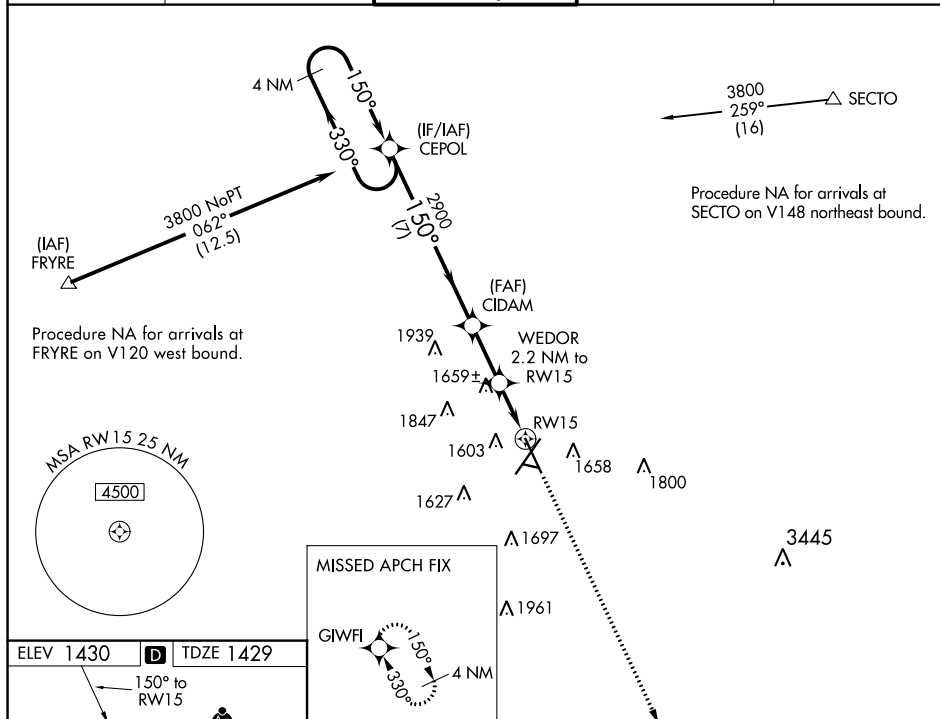
JOE FOSS FIELD (FSD)

JOE FOSS FIELD (FSD)

For uncompensated Baro-VNAV systems, LNAV/VNAV NA below -21°C (-5°F) or above 54°C (130°F). DME/DME RNP-0.3 NA. Helicopter visibility reduction below ¾ SM not authorized.

MISSED APPROACH:
Climb to 3800 direct
GIWFI and hold.

| | | | | |
|---------------|--|---|------------------------|------------------|
| ATIS 126.6 | SIoux FALLS APP CON ★ 125.8 284.725 | SIoux FALLS TOWER ★ 118.3 (CTAF) 0 257.8 | GND CON 121.9 348.6 | UNICOM 122.95 |
|---------------|--|---|------------------------|------------------|



TDZ/CL Rwy 21
 MIRL Rwy 9-27
 REIL Rws 15 and 33
 HIRL Rws 3-21 and 15-33

[illegible]