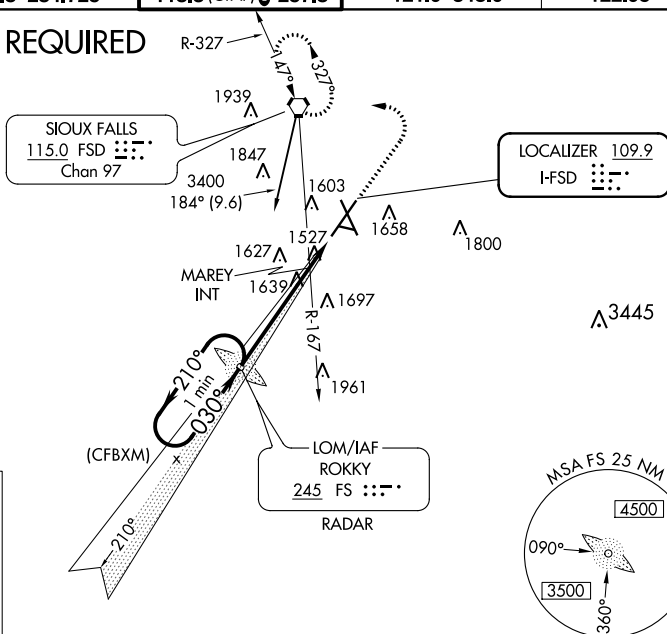


ILS or LOC RWY 3

MISSED APPROACH: Climb to 3400 then left turn direct FSD VORTAC and hold.

UNICOM
122.95

ADF or RADAR REQUIRED





ROKKY
245 FS ::-·
RADAR

FSD

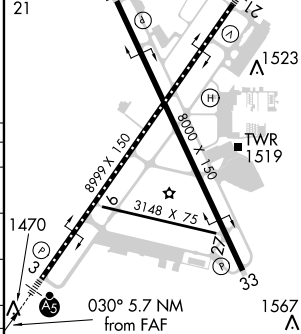
* LOC only

A horizontal line representing a molecule of total length 5.7 nm. The line is divided into two segments by a vertical tick mark. The left segment is labeled "4.3 nm" and the right segment is labeled "1.4 nm".

CATEGORY	A	B	C	D
S-ILS 3	1674/24 250 (300-½)			
S-LOC 3	1940/24 516 (600-½)	1940/55 516 (600-1)		
 CIRCLING	1960-1 530 (600-1)	1980-1 550 (600-1)	2060-1¾ 630 (700-1¾)	2200-2½ 770 (800-2½)
MAREY FIX MINIMUMS (DUAL VOR RECEIVERS REQUIRED)				
S-LOC 3	1800/24 376 (400-½)	1800/35 376 (400-¾)		
 CIRCLING	1960-1 530 (600-1)	1980-1 550 (600-1)	2060-1¾ 630 (700-1¾)	2200-2½ 770 (800-2½)

ELEV 1430	D	TDZE 1424
-----------	----------	-----------

REIL Rwy 15 and 33
HIRL Rwy 3-21 and 15
MIRL Rwy 9-27 **L**
TDZ/CL Rwy 9



FAF to MAP 5.7 NM

Knots	60	90	120	150	180
Min:Sec	5:42	3:48	2:51	2:17	1:54

JOE FOSS FIELD (FSD)
ILS or LOC RWY 3