

SIoux FALLS, SOUTH DAKOTA

HI-ILS or LOC RWY 3

LOC I-FSD <u>109.9</u>	APCH CRS 030°	Rwy Idg 8999 TDZE 1424 Arpt Elev 1430
----------------------------------	-------------------------	--

JAL-396 [USAF]

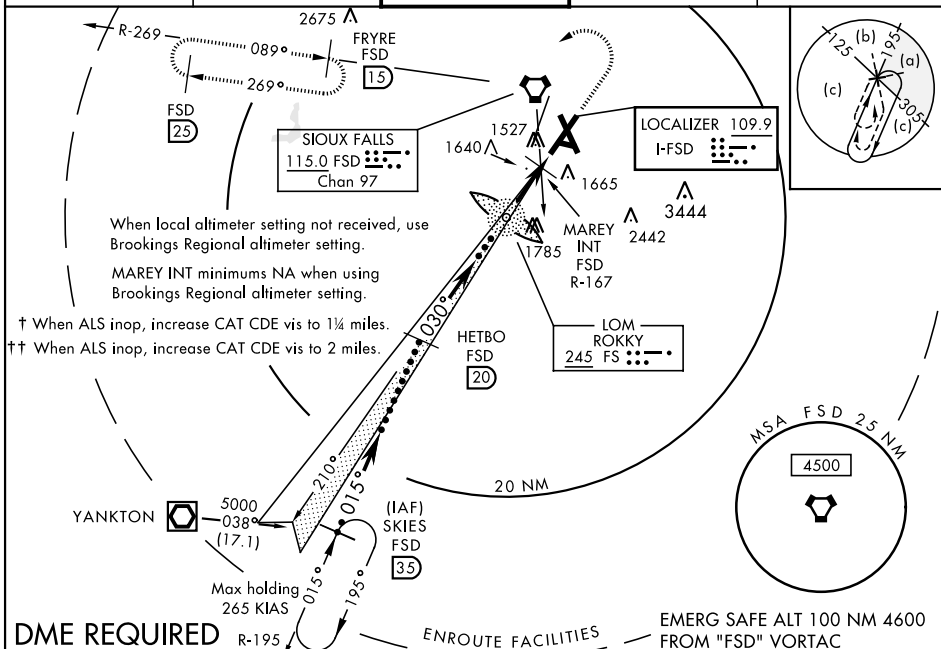
SIOUX FALLS/JOE FOSS FIELD (KFSD)

T * When ALS inop, increase CAT E vis to $\frac{3}{4}$ mile.
 ** When ALS inop, increase CAT E vis to $1\frac{3}{4}$ mile.
 *** When ALS inop, increase CAT E vis to $1\frac{1}{4}$ mile.



MISSED APPROACH: Climb to 3400, then climbing left turn to 5000 via heading 240° and via FSD VORTAC R-269 to FRYRE (FSD 15 DME) and hold.

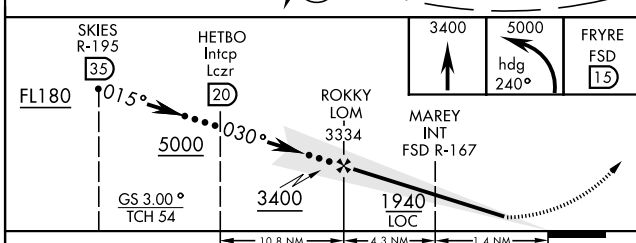
ATIS 126.6	SIJOUX FALLS APP CON 125.8 126.9 353.6	SIJOUX FALLS TOWER ★ 118.3 257.8	GND CON 121.9 348.6	ASR
---------------	---	-------------------------------------	------------------------	-----



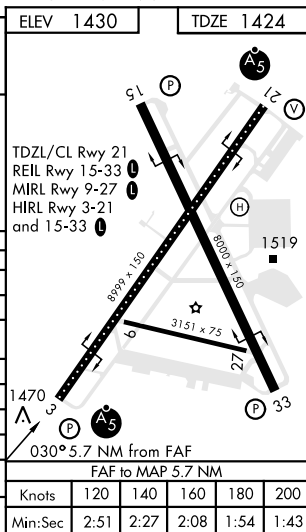
DME REQUIRED

ENROUTE FACILITIES

EMERG SAFE ALT 100 NM 4600
FROM "FSD" VORTAC



CATEGORY	C	D	E
S-ILS 3 *	1674/24	250	(300-½)
S-LOC 3 **	1940/50 516 (600-1)	1940/60 516 (600-1½)	
CIRCLING	1980-1½ 550 (600-1½)	2040-2 610 (700-2)	2300-3 870 (900-3)
MAREY FIX MINIMA			
S-LOC 3 ***	1780/24 356 (400-½)	1780/40 356 (400-¾)	
BROOKINGS REGIONAL ALTIMETER SETTING			
S-ILS 3 †	1805/40	381	(400-¾)
S-LOC 3 ††	2080/60 656 (700-1½)	2080-1½ 656 (700-1½)	2080-1¾ 656 (700-1¾)
CIRCLING	2120-2 690 (700-2)	2280-2¾ 850 (900-2¾)	2440-3 1010 (1100-3)



SIOUX FALLS, SOUTH DAKOTA

43°35'N-96°44'W

SIOUX FALLS/JOE FOSS FIELD (KFSD)

HI-ILS or LOC RWY 3

Amdt 9A 17OCT13

NC-1, 03 DEC 2020 to 31 DEC 2020

NC-1, 03 DEC 2020 to 31 DEC 2020