

RAPID CITY, SOUTH DAKOTA

TACAN RCA Chan 25	APCH CRS 302°	Rwy ldg 13,497 TDZE 3192 Arprt Elev 3276	JAL-343 [USAF]	ELLSWORTH AFB (KRCA)
----------------------	------------------	--	----------------	----------------------

HI-TACAN Z RWY 31

▼ * When ALS inop, increase CAT CDE vis to 1¾ mile.

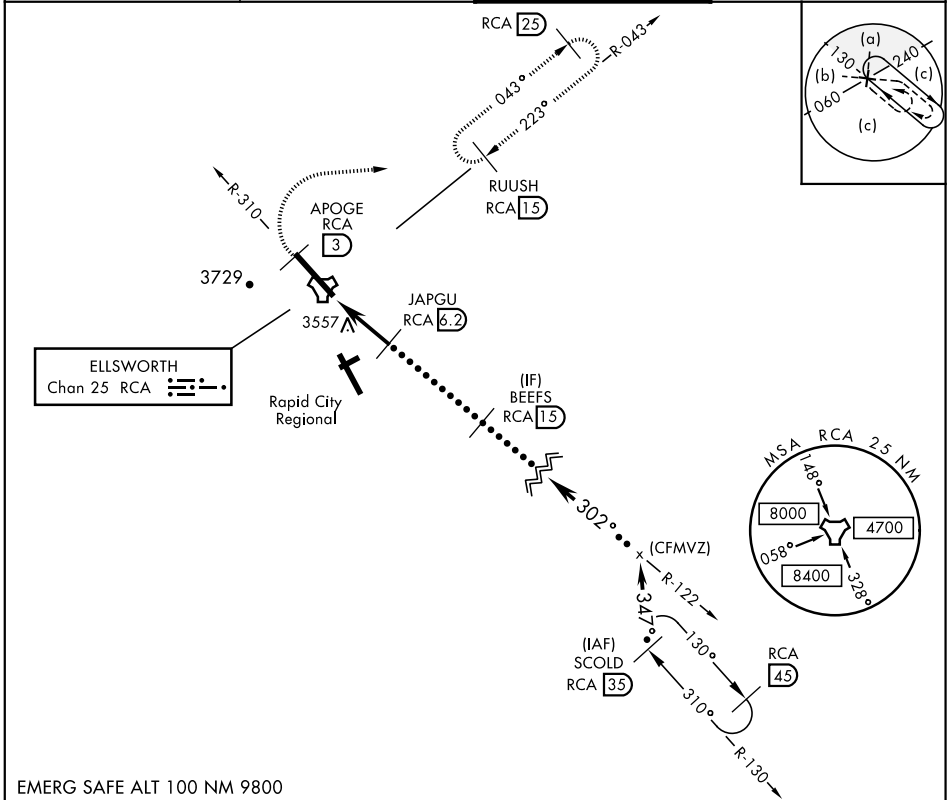
** CAT E circling restricted to 28th BW aircraft only; 28th BW aircraft will remain within Class D airspace.

ALSF-1

A1

MISSED APPROACH: Track outbound RCA R-310 to 3 DME (APOGE), then turn right to join RCA R-043 to 15 DME (RUUSH) and hold. Maintain 6000.

ATIS ★ 120.625 269.9	ELLSWORTH APP CON 119.5 259.1	ELLSWORTH TOWER ★ 126.05 253.5	GND CON 121.8 275.8
-------------------------	----------------------------------	-----------------------------------	------------------------



EMERG SAFE ALT 100 NM 9800			
APOGE RCA R-310 3	6000 RCA R-043	RUUSH RCA 15	SCOLD R-130 35
TACAN	JAGPU 6.2	BEEFS 15	FL180
YODO 1.3	5000	6000	302
5.5 NM	4.9 NM		3.06° TCH 70
CATEGORY	C	D	E
S-31*	3820-1½	628	(600-1½)
CIRCLING**	3880-1½ 604 (700-1½)	3980-2¼ 704 (800-2¼)	4040-2¾ 764 (800-2¾)

ELEV 3276 TDZE 3192

3348

TWR

HIRL Rwy 13-31

302° to TACAN

HI-TACAN Z RWY 31