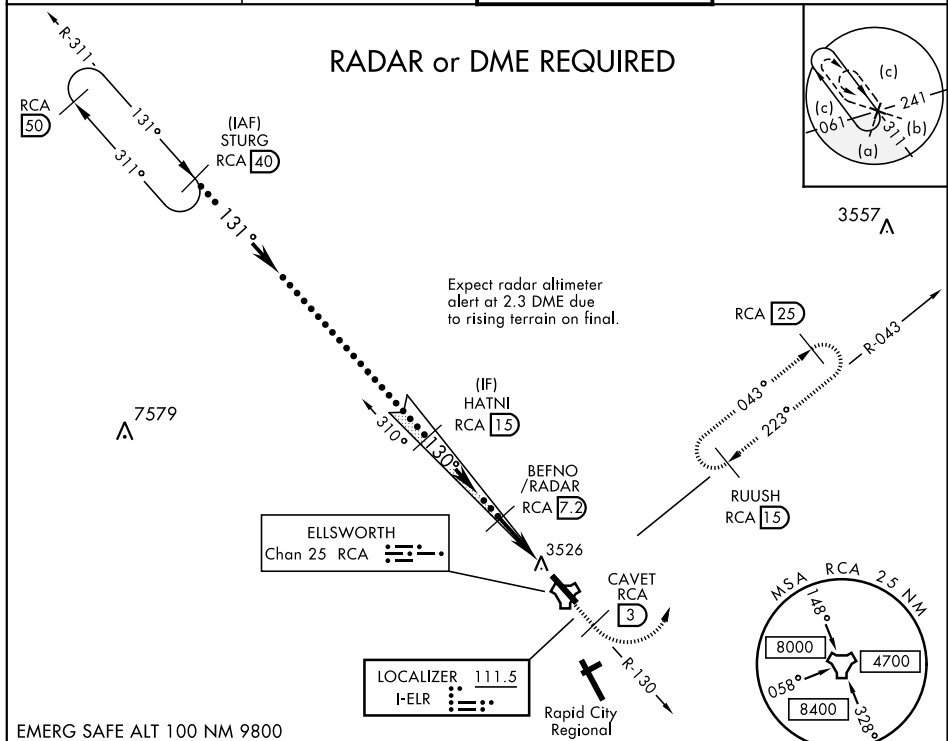


LOC I-ELR 111.5	APCH CRS 130°	Rwy Ldg 13,497 TDZE 3276 Arprt Elev 3276	JAL-343 [USAF]	ELLSWORTH AFB (KRCA)
▼ * When ALS inop, increase RVR to 40 and vis to ¾ mile. ** When ALS inop, increase vis to 1 ¾ miles. *** CAT E circling restricted to 28 BW aircraft only; 28 BW aircraft will remain within Class D airspace.			ALSF-1 (A1)	MISSED APPROACH: Track outbound RCA R-130 to 3 DME (CAVET), then turn left to join RCA R-043 to 15 DME (RUUSH) and hold. Maintain 6000.
ATIS ★ 120.625 269.9	ELLSWORTH APP CON 119.5 259.1	ELLSWORTH TOWER ★ 126.05 253.5	GND CON 121.8 275.8	



EMERG SAFE ALT 100 NM 9800			
† LOC Only CAVET RCA R-130 3 6000 RUUSH RCA 15 VGSI and ILS glidepath not coincident (VGSI Angle 3.00 TCH 62). AGBAH 1.9 TACAN 5.3 NM 5 NM			
STURG 40 FL190 131° Intep Lczt HATNI 15 6000 130° 5200 5.3 NM 5 NM			
GS 3.00° TCH 50 BEFNO /RADAR 7.2 AGBAH 1.9 TACAN 5.3 NM 5 NM			
CATEGORY	C	D	E
S-ILS 13 *	3476/24	200	(200-½)
S-LOC 13 **	3780/55	504	(600-1)
***	3880-1¾ 604 (700-1¾)	3980-2¼ 704 (800-2¼)	4040-2¾ 764 (800-2¾)
CIRCLING			