

WAAS CH 45804 W07A	APP CRS 069°	Rwy Idg TDZE 1744 Apt Elev 1744
--	------------------------	---

RNAV (GPS) RWY 7

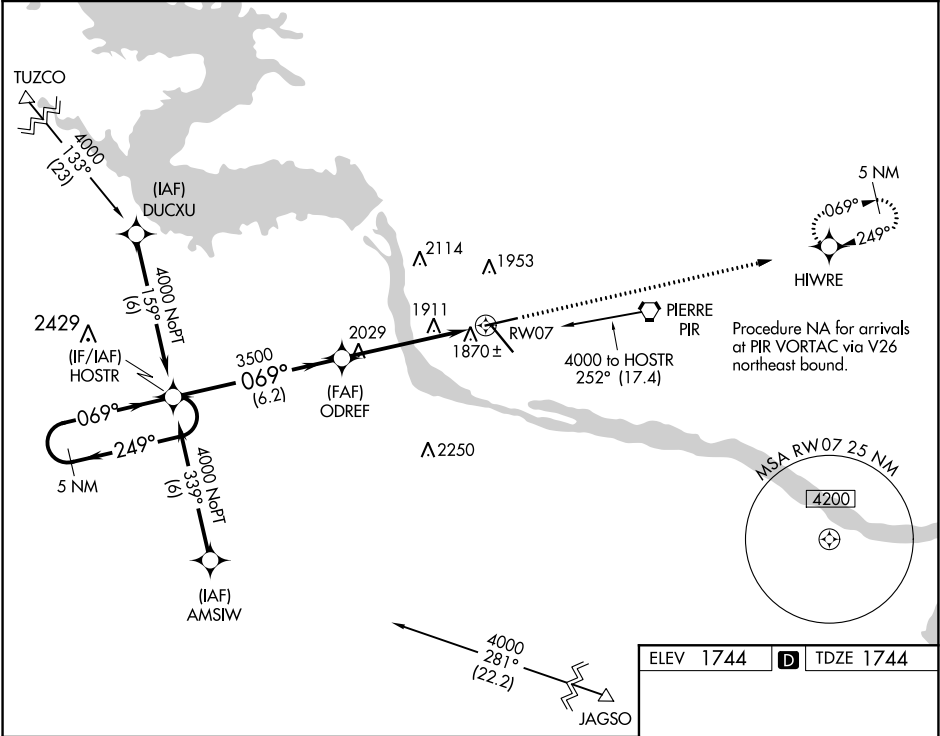
PIERRE RGNL (PIR)

⚠

For uncompensated Baro-VNAV systems, LNAV/VNAV NA below -18°C (0°F) or above 45°C (113°F).
DME/DME RNP-0.3 NA. Visibility reduction by helicopters NA.

MISSED APPROACH: Climb to 4000 direct HIWRE and hold.

ASOS 119.025	MINNEAPOLIS CENTER 125.1 269.1	CTAF 122.70	UNICOM 122.95
------------------------	--	-----------------------	-------------------------



5 NM Holding Pattern

4000 ← 249° 069° →

GP 3.00° TCH 47

3500

ODREF

*1.2 NM to RW07

RW07

6.2 NM

4.1 NM

1.2

4000 HIWRE

*LNAV only

CATEGORY	A	B	C	D
LPV DA	2057-1 313 (400-1)			
LNAV/VNAV DA	2170-1½ 426 (500-1½)			
LNAV MDA	2180-1 436 (500-1)	2180-1¼ 436 (500-1¼)	2180-1½ 436 (500-1½)	
CIRCLING	2240-1 496 (500-1)	2300-1 556 (600-1)	2400-1¾ 656 (700-1¾)	2460-2¼ 716 (800-2¼)

ELEV 1744 TDZE 1744

069° to RW07

6880 X 150 0.6% UP

6900 X 100

1769

REIL Rwy 7, 13, and 25

HIRL Rwy 7-25 and 13-31

NC-1, 03 DEC 2020 to 31 DEC 2020

NC-1, 03 DEC 2020 to 31 DEC 2020