

WAAS CH <b>90128</b> <b>W35A</b>	APP CRS <b>350°</b>	Rwy Idg <b>8000</b> TDZE <b>834</b> Apt Elev <b>842</b>
--	------------------------	---

## RNAV (GPS) 7 RWY 35

MINNEAPOLIS-ST PAUL INTL/WOLD-CHAMBERLAIN (MSP)

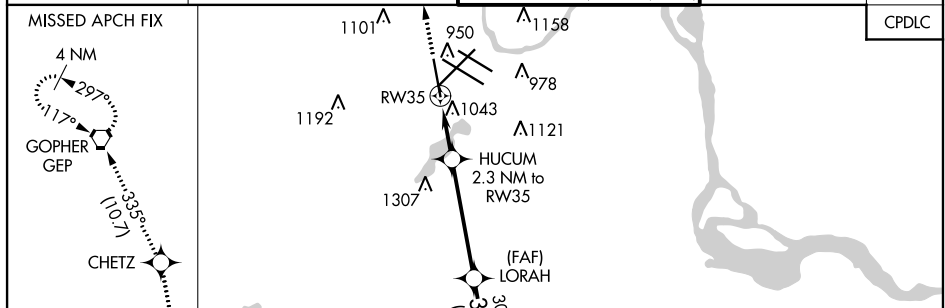
**T** For uncompensated Baro-VNAV systems, LNAV/VNAV NA below -19°C (-2°F) or above 54°C (130°F). DME/DME RNP-0.3 NA. For inop ALS, increase LPV Cat E visibility to RVR 4000, LNAV/VNAV Cat E visibility to 1½ SM and LNAV Cats C/D/E visibility to 1½ SM.

ALSF-2

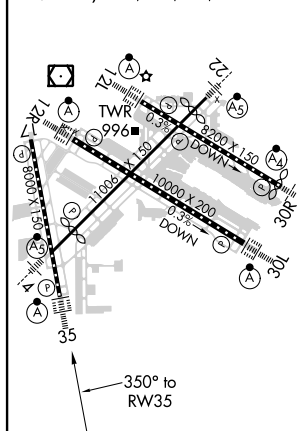


**MISSED APPROACH:** Climb to 3000 direct CHETZ and on track 335° to GEP VORTAC and hold.

D-ATIS	MINNEAPOLIS APP CON	MINNEAPOLIS TOWER	GND CON	CUNC DEL
ARR 135.35 239.275	118.725 335.65 (Rwy 35)	123.675 273.55 (17-35)	N 121.8 348.6	
DEP 120.8	119.3 335.65 (12L-30R, 4-22, 17)	123.95 273.55 (12L-30R)	S 121.9 348.6	133.2
	126.95 335.65 (12R-30L, 4-22)	126.7 273.55 (12R-30L, 4-22)	W 127.925 348.6	



ELEV 842	<b>D</b>	TDZE 834
HIRL all Rwy		
REIL Rwy 17		
TDZ/CL Rwy 12L, 12R, 30L, and 35		



3000 ↑	CHETZ ✦	tr 335°	GEP ◡	VGS1 and RNAV glidepath not coincident (VGS1 Angle 3.00/TCH 71).					ROZEE	
*LNAV only		HUCUM 2.3 NM to RW35			LORAH 3000				4000	
RW35		*1.2 NM to RW35			350° 3000				GP 3.00° TCH 55	
1.2 NM		1.1 NM		4.3 NM		3.1 NM				
CATEGORY	A	B	C	D	E					
LPV DA	1034/18 200 (200-½)									
LNAV/ VNAV	DA	1204/40 370 (400-¾)								
LNAV MDA	1300/24	466 (500-½)	1300/50 466 (500-1)							
CIRCLING	1360-1	518 (600-1)	1460-1¾ 618 (700-1¾)	1660-2¾ 818 (900-2¾)	1800-3 958 (1000-3)					