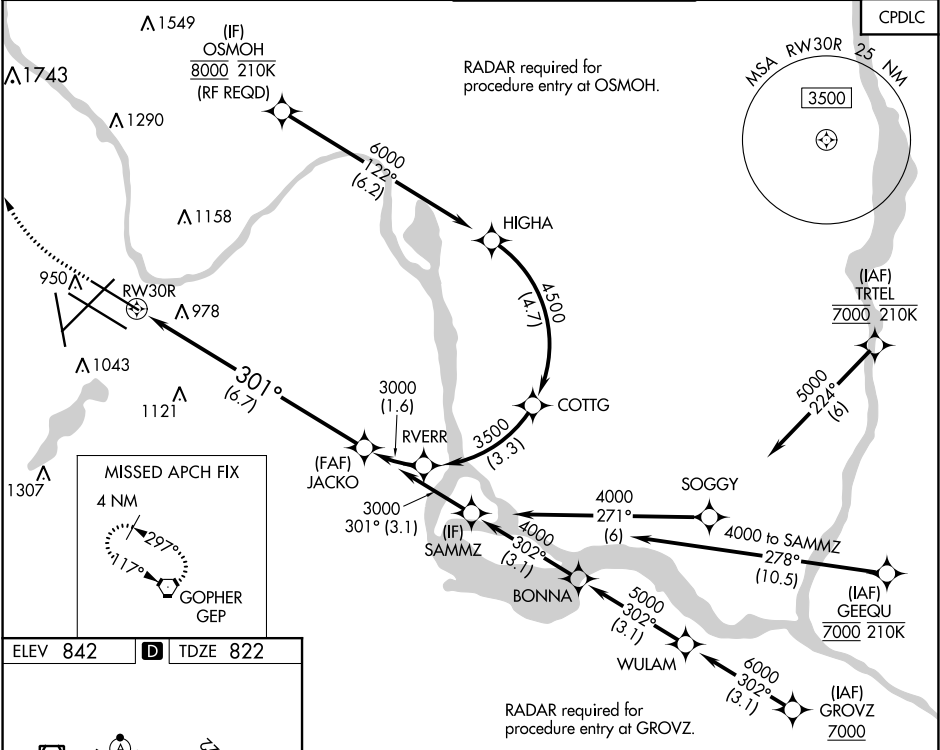


|             |          |             |
|-------------|----------|-------------|
| APP CRS     | Rwy Idg  | <b>8000</b> |
| <b>301°</b> | TDZE     | <b>822</b>  |
|             | Apt Elev | <b>842</b>  |

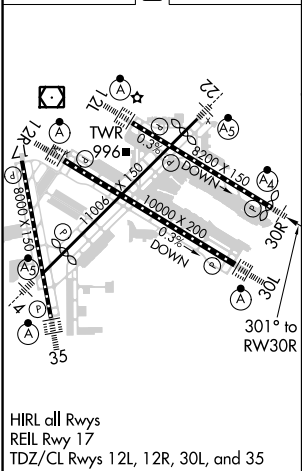
RNAV (RNP) Y RWY 30R  
MINNEAPOLIS-ST PAUL INTL/WOLD-CHAMBERLAIN (MSP)

|   |       |   |
|---|-------|---|
| <b>▼</b> For uncompensated Baro-VNAV systems, procedure NA below -19°C (-2°F) or above 54°C (130°F). Simultaneous approach authorized with Rwy 30L and ILS V RWY 35 (CONVERGING). GPS required. For inop ALS, increase RNP 0.15 all Cats visibility to RVR 4500 and RNP 0.30 Cat D visibility to 1½ SM. | MALSF | MISSED APPROACH: Climb to 1300 then climbing right turn to 3000 direct GEP VORTAC and hold. |
|---|-------|---|

|   |  |   |   |                          |
|---|--|---|---|--------------------------|
| D-ATIS<br>ARR <b>135.35 239.275</b><br>DEP <b>120.8</b> | MINNEAPOLIS APP CON<br><b>118.725 335.65</b> (Rwy 35)<br><b>119.3 335.65</b> (12L-30R, 4-22, 17)<br><b>126.95 335.65</b> (12R-30L) | MINNEAPOLIS TOWER<br><b>123.675 273.55</b> (17-35)<br><b>123.95 273.55</b> (12L-30R)<br><b>126.7 273.55</b> (12R-30L, 4-22) | GND CON<br><b>N 121.8 348.6</b><br><b>S 121.9 348.6</b><br><b>W 127.925 348.6</b> | CLNC DEL<br><b>133.2</b> |
|---|--|---|---|--------------------------|



|                 |          |                 |
|-----------------|----------|-----------------|
| ELEV <b>842</b> | <b>D</b> | TDZE <b>822</b> |
|-----------------|----------|-----------------|



|                        |                      |     |   |                                   |
|------------------------|----------------------|-----|---|-----------------------------------|
| 1300                   | 3000                 | GEP | VGSI and RNAV glidepath not coincident (VGSI Angle 3.00/TCH 71).<br>See planview for multiple IF locations. | JACKO                             |
|                        |                      |     |   | <u>3000</u><br>GP 3.00°<br>TCH 55 |
| CATEGORY               | A                    | B   | C   | D                                 |
| RNP 0.15 DA            | 1097/40 275 (300-¾)  |     |   |                                   |
| RNP 0.30 DA            | 1298-1⅓ 476 (500-1⅓) |     |   |                                   |
| AUTHORIZATION REQUIRED |                      |     |   |                                   |

NC-1, 03 DEC 2020 to 31 DEC 2020

NC-1, 03 DEC 2020 to 31 DEC 2020