

WAAS CH <b>60927</b> <b>W22A</b>	APP CRS <b>225°</b>	Rwy Idg <b>10006</b> TDZE <b>828</b> Apt Elev <b>842</b>
--	------------------------	--

## RNAV (GPS) RWY 22

MINNEAPOLIS-ST PAUL INTL/WOLD-CHAMBERLAIN (MSP)

RNP APCH.

**T** Rwy 22 helicopter visibility reduction below RVR 4000 NA. For uncompensated Baro-VNAV systems, LNAV/VNAV NA below -27°C or above 54°C. For inop ALS, increase LPV Cat E visibility to RVR 5500, LNAV/VNAV all Cats visibility to RVR 6000 and LNAV Cat A/B visibility to RVR 5500, and Cat E to 1 1/2 SM.

MALSR

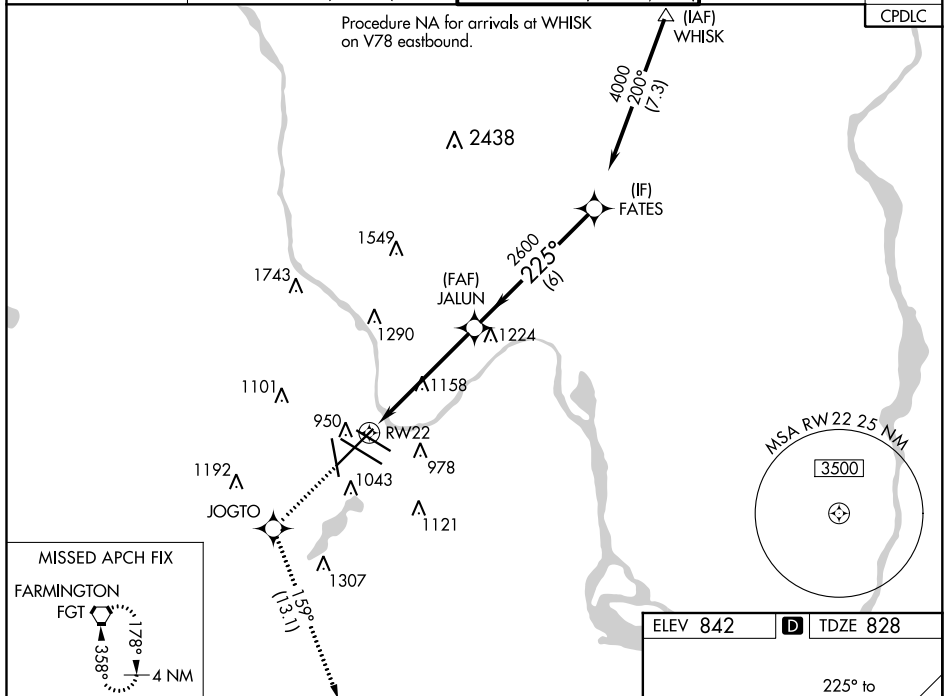
**MISSED APPROACH:** Climb to 3000  
direct JOGTO and on track 159° to  
FGT VORTAC and hold.

D-ATIS		MINNEAPOLIS APP CON		MINNEAPOLIS TOWER		GND CON		CLNC DEL
ARR	135.35 239.275	118.725	335.65 (Rwy 35)	123.675	273.55 (17-35)	N 121.8	348.6	
DEP	120.8	119.3	335.65 (12L-30R, 4-22, 17)	123.95	273.55 (12L-30R)	S 121.9	348.6	
		126.95	335.65 (12R-30L, 4-22)	126.7	273.55 (12R-30L, 4-22)	W 127.925	348.6	133.2

Procedure NA for arrivals at WHISK  
on V78 eastbound.



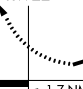
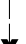

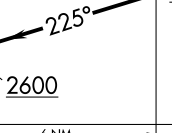
△ (IAF)  
WHISK

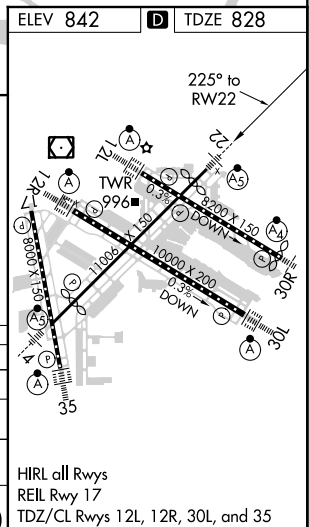
CPDLC



MISSED APCH FIX  
FARMINGTON  
FGT

178°  
358°  
4 NM

3000 ↑		JOGTO 		FGT 		VGS1 and RNAV glidepath not coincident (VGS1 Angle 3.00/TCH 61).					
* LNAV only 		* 1.7 NM to RW22 		JALUN 2600 		FATES 4000 225° 2600 		GP 3.00° TCH 55°			
CATEGORY		A		B		C		D		E	
LPV DA				1190/40		362 (400-¾)					
LNAV/VNAV DA				1227/45		399 (400-⅞)					
LNAV MDA		1420/40		592 (600-¾)		1420-1¼		592 (600-1¼)			
C CIRCLING		1420-1		578 (600-1)		1460-1¾ 618 (700-1¾)		1660-2¾ 818 (900-2¾)		1800-3 958 (1000-3)	



MINNEAPOLIS, MINNESOTA  
Amdt 1C 10SEP20

MINNEAPOLIS-ST PAUL INTL/WOLD-CHAMBERLAIN (MSP)  
44°53'N-93°13'W **PNNAV (GPS) PWW 22**

RNAV (GPS) RWY 22