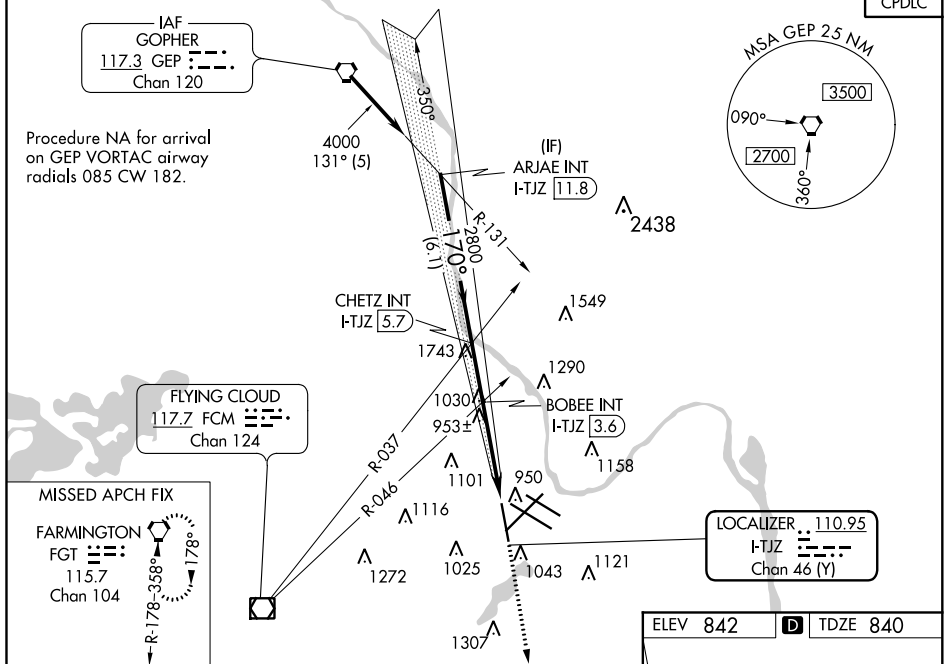


LOC RWY 17  
MINNEAPOLIS-ST PAUL INTL/WOLD-CHAMBERLAIN (MSP)

**MISSED APPROACH:** Climb to 1300 then climbing right turn to 3000 direct FGT VORTAC and hold.

D-ATIS	MINNEAPOLIS APP CON	MINNEAPOLIS TOWER	GND CON	CNLC DEL
ARR 135.35 239.275	118.725 335.65 (Rwy 35)	123.675 273.55 (17-35)	N 121.8 348.6	
DEP 120.8	119.3 335.65 (12L-30R, 4-22, 17)	123.95 273.55 (12L-30R)	S 121.9 348.6	133.2
	126.95 335.65 (12R-30L)	126.7 273.55 (12R-30L, 4-22)	W 127.925 348.6	
				CPDLC



Obstacle clearance chart for the approach to Bobee VORTAC. The chart shows a 4000-foot obstacle at 170 degrees, a 2800-foot obstacle at 305 degrees, and a 2100-foot obstacle at 170 degrees. The chart also shows the locations of ARJAE INT, CHETZ INT, BOBEE INT, and the Bobee VORTAC antenna. The chart includes a table of minimums for the approach.

CATEGORY	A	B	C	D
S-17	2100/60 1260 (1300-1¼)	2100-1½ 1260 (1300-1½)	2100-3	1260 (1300-3)
<b>C</b> CIRCLING	2100-1¼ 1258 (1300-1¼)	2100-1½ 1258 (1300-1½)	2100-3	1258 (1300-3)

BOBEE FIX MINIMUMS (DUAL VOR RECEIVERS OR DME REQUIRED)

S-17	1220/55 380 (400-1)		
<b>C</b> CIRCLING	1360-1 518 (600-1)	1460-1¾ 618 (700-1¾)	1660-2¾ 818 (900-2¾)

